



The Bay Phil

A publication of Friends of the Western Philatelic Library, Inc.,
 an organization of philatelists assisting in the growth and maintenance of the
 Western Philatelic Library, 3004 Spring Street, Redwood City, CA
 Mailing Address: FWPL, P.O. Box 2219, Sunnyvale, CA 94087-2219

March/April 2015

Volume 44 No. 2, Whole Number 307
 ISSN 8756-5153

VOLUNTEER WORK AT LIBRARY!

Due to popular demand one Saturday each month will be set aside for volunteers to visit the library and put in a few hours helping to work through our many tasks and piles of literature. The third Saturday of each month will be Volunteer Day. Here are the dates for 2012.

April 18, 2015
 May 16, 2015
 June 20, 2015
 July 18, 2015
 August 15, 2015
 September 19, 2015

MEMBERSHIP NEWS

Deceased

Moved

New

Book Returns

The WPL exists as a resource for everyone. The lending policy is very lenient for anyone borrowing books or other items. Most members appreciate this service and use it well, including returning the items in a timely manner. However, a few overextend their borrowing time and stretch it to the limit. It makes more work and problems to the few volunteers that we have who need to chase down delinquent borrowers and call them for returns that are sometimes **years** old. Please check any of your borrowed books and return them so others might benefit from them. The alternative is one we don't like: the limiting of borrowers who are chronic extenders, by denying their borrowing privilege.

In This Issue

Members - Deceased, Moved or New	1
Editor's Corner	2
Thank You for Your Contributions	3
More Building Fund Donations	3
Book Review	4
Notice	5
Book Review	6
Tear Sheets	7-10
NY 2016 Announcements	11-13
Book Review Review	14
Membership Application	15



Friends of the Western Philatelic Library, Inc.
APS Chapter 836

Preserving Philatelic History for the Future



CHAIR	Stuart Levin	stulev@ix.netcom.com
V.C. - ACQUISITIONS	Roger Skinner	rogerskinner96@yahoo.com
V.C. - MEMBERSHIP	Dick Clever	richard@asiaphilatelics.com
SECRETARY		
TREASURER	Jo Skinner	skinnerjo80@yahoo.com
DIRECTOR		
DIRECTOR		
DIRECTOR		
DIRECTOR		
DIRECTOR		
	---Staff---	
WEB MASTER		
BINDERY	Roy C. Teixeira	
BAY PHIL EDITOR	Richard M. Hanchett	editorofbayphil@cox.net
Postal Address	6 Rainbow Court	Warwick, RI 02889-1118
Library Hours:	Monday	11AM to 3PM
	Tuesday	Noon to 5 PM
	Friday	10AM to 5PM
	Saturday	Noon to 5PM
	Web Site	www.fwpl.org
	Tear Sheet listing at Leonard Hartmann's Internet Web Site	www.pbbooks.com

Editor's Corner

WESTPEX 2015 is just around the corner and next year NY 2016 brings the FIP sponsored International Exhibition to NY. There will be plenty of dealers, exhibits and meetings to occupy your time (and billfold). There are articles regarding NY 2016 on pages 11, 12 and 13.

Please also pay particular attention to page 5.

Spring has almost returned to the Northeast USA, but there is still a large amount of snow. We would really like to figure out a way to ship it the drought stricken West.

Come to WESTPEX 2016 for an enjoyable which also has wonderful exhibits and dealers who will help you get rid of your excess dollars.

Richard M. Hanchett, Editor
editorofbayphil@cox.net

BOARD MEETINGS

Regular Board Meetings are open to all FWPL members. Meetings begin at 1PM the fourth Wednesday of each month at the WPL at 3004 Spring Street. Feel free to drop in and see what is going on. You might call President Stuart Leven, (408) 978-0193 beforehand to confirm details of location, time and date.

Mission Statement

The Western Philatelic Library exists to enhance the preservation and dissemination of philatelic knowledge by acquiring, organizing, interpreting and distributing information resources in a globally networked community.

WPL Vision Statement

We will be known as setting the standard for providing a responsive, convenient gateway to philatelic knowledge.

Our Commitments:

- To build and conserve a world-class collection of printed, electronic and other media;
- To support, extend and enrich the pursuit of knowledge and enjoyment through stamp collecting;
- To provide access and support for beginners, hobbyists, specialists, writers and postal historians;
- To promote knowledge through public educational events and displays; and
- To collaborate and cooperate with other libraries.

THE BAY PHIL

The Bay Phil is the bi-monthly newsletter of the Friends of the Western Philatelic Library (FWPL), a non-profit organization. The contents of *The Bay Phil* are copyrighted © 2015 by FWPL. It has always been our policy that material can be used in whole or in part by individuals or other non-profit organizations, provided credit is given to *The bay Phil* and the individual authors of the reproduced material. A copy of the publication in which the material is printed is requested to be provided for our archives.

THANK YOU FOR YOUR DONATIONS

Dale Egan (CA) philatelic periodical
Wally Jolliff (CA) philatelic book
Matt Hedley () cash donations
Wayne Menuz (CA) various philatelic periodicals and books and auction catalogues
Hugh Lawrence (CA) auction catalogues and philatelic book
Lester Wadsworth (NV) various philatelic periodicals and auction catalogues
Loren Singh (AZ) various philatelic publications and auction catalogues
Vivian Skrpick (CA) various philatelic souvenir items
Michael S. Hart (CA) various stamps and first day covers
Coades Gherman (CA) various stamps and philatelic periodical
Graham Chioupek (CA) various philatelic periodicals and auction catalogues
Stuart Leven (CA) various philatelic periodicals and newsletters and auction catalogues
Bill Dwyer (WA) cash donation
Homer Ledford (CA) various first day covers in album
Charles J. La Blonde (CO) various philatelic periodicals
Bill Tatham (CA) various philatelic journals and catalogues
Art Bunce (CA) various auction catalogues
Dale Egan (CA) various philatelic and coin periodicals, catalogues and handbooks
Charles J. La Bionde (CO) various philatelic periodicals, journals and price lists
Douglas Gary () various philatelic books and periodicals
JHM Stamps and Collectibles (CA) various philatelic catalogues and periodicals

MORE BUILDING FUND DONATIONS

Donations to the Building Fund now total \$12,120.00 thanks to additional donations received from Greg Cykman, Gary Graf, Ted Liston, Northwest Philatelic Library, Richard Rosenthal and C. Eric Seedorff.

All donations are greatly appreciated by all who are seeking the opportunity to enrich their philatelic knowledge, whether in person or by mail requests.

THANK YOU!!

Are your philatelic shelves getting cluttered? Do they contain material that you no longer refer to? Do they have items which you are no longer collecting? Do you have stamps that you are no longer interested in?

If the answer to any of the above is 'YES', please don't just throw them out with the trash. Why not donate them instead to the WPL??? Someone else will be interested in those things which no longer interest you. Your donation will help other collectors in addition to helping the WPL.

Call or email Roger Skinner [see page 2 for email address-ed.] for directions regarding mailing your material or for information on when they can be dropped off in person.

Your donation will be greatly appreciated.

Richard: Type the url fwpl.org/dev and you'll notice the new web design we have been working on it seems like forever. Readers may want to enter it for design and content comments. The posts at the top are static but the posts on the left are considered Blogs that can be edited or added to by the web master. Roger

Book Review: *Soviet Postal Censorship during World War II* reviewed by Alan Warren

Soviet Postal Censorship during World War II by Per-Christian Wallèn. 124 pages, 8 ¼ by 11 ¾ inches, perfect bound, card covers, in English, Norwegian War and Field Post Society, Norway, 2014. 200 NOK (approx. \$30 plus postage), details from Knut Arveng, knut.arveng@gmail.no.

The author has published in *Post-Rider* and is active in the German Arbeitsgemeinschaft Russland e.V. His interest in Russian censorship during the Great Patriotic War was stimulated when he took a language course in St. Petersburg. The information in this book has been gleaned from the many covers, postcards, and postal stationery that he has examined over the years. He realizes it is not complete but with this handbook collectors can begin to understand the censorship markings found on this material.

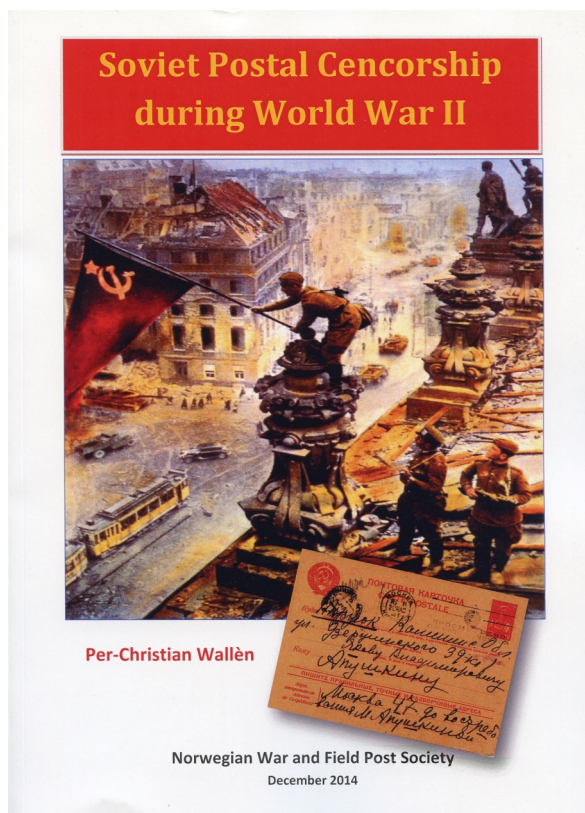
He divides his presentation into three periods: 1941-1942, 1942-1943, and 1943-1945 (marked 1943-1953 in the introduction but not in later discussions). The introduction also contains six important tables for reference when using the handbook. These tables list the civil censorship locations for oblast/krai (administrative division), fieldpost sorting points, naval postal bases, army postal bases, double circle cancels used on international mail, and digits censor cancels. Locations for each are included in the tables.

The listings begin with the Army postal sorting points in numerical order, and data for each year period that includes earliest and latest recorded dates. The Naval post bases receive similar treatment followed by the Army fieldpost bases. At the end of this section the author shows three Army censor markings whose locations are unknown. The largest section lists the oblast/krai censor markings alphabetically, again with comments by year-period and earliest and latest known dates. Throughout the handbook cancel types are shown and various numbers associated with them.

A bibliography of over 30 references is given, and two government decrees relating to censorship are reprinted in Russian and English. A brief index concludes the volume. Most illustrations are in color and show just the censor marking; however, a few entire covers are also shown.

Recognizing that this handbook is a starting point and a work in progress, it will serve

collectors to understand this author's approach to categorizing and identifying Soviet censorship markings during World War II.



What a shame that this page is blank

It could have contained YOUR article or YOUR book review. Unfortunately you never sent them to me and now we have the page empty.

This is YOUR journal and it seems unfair to leave the burden of articles and book reviews to Jo Skinner and Alan Warren.

So, get to work and send me something. Any article or book review is acceptable so long as it is neither religious nor political. Any editor, and I am no exception, loves it when he has sufficient content for two or three issues in advance.

**Book Review: *Parks, Postmarks & Postmasters: Post Offices within the National Park System*
reviewed by Alan Warren**

Parks, Postmarks & Postmasters: Post Offices within the National Park System by Paul R. Lee II. 260 pages, 8 ¼ by 10 ¾ inches, perfect bound with card covers or hardbound, Rocky Mountain Philatelic Library, Denver, Colorado, 2014. ISBN 978-0-9773578-5-7, \$29.99 (softbound) or \$50.00 (hardbound) plus shipping, from Rocky Mountain Philatelic Library, 2038 South Pontiac Way, Denver CO 80224, or www.rmpldenver.org.

As a retired 40-year career employee of the National Park Service, and a collector as well, author Lee is in the ideal position to write about the parks and their post offices. He limits the post office listings to those that are within the boundaries of the parks, even though a few were, or are, on privately held land. Some RPOs associated with national parks mail are not included. If a park's mail was handled by an outside post office, the park is not included, for example Arcadia National Park.

The listings are alphabetically by park name from Agate Fossil Beds National Monument in Nebraska to Zion National Park in Utah. Each listing includes the county in which the post office is located, the names of the postmasters and their appointment dates, and when the offices were established and discontinued.

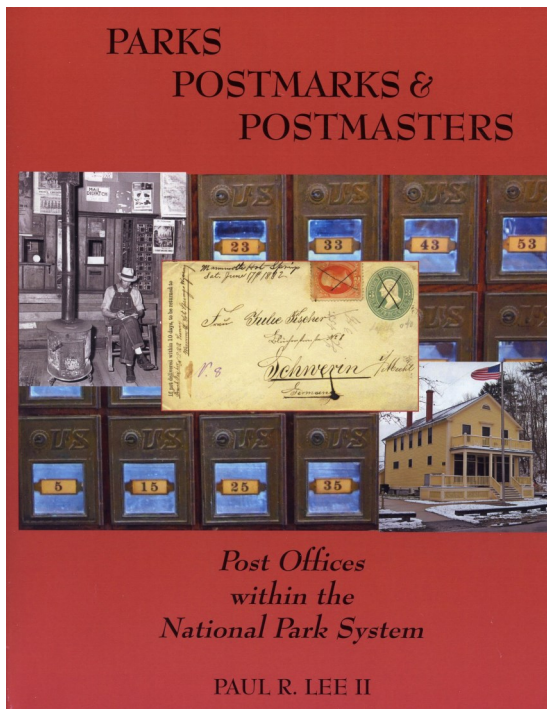
Author Paul Lee provides a brief history of each office, sometimes including wonderful anecdotes that are amusing and entertaining. Some side issues are pointed out like that of McGreely's Express local post that provided mail service between Skagway and Dyea in the Klondike Gold Rush National Park of Alaska.

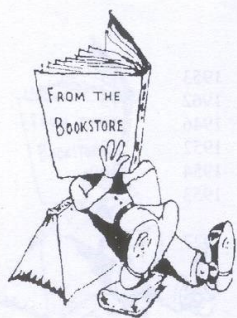
Among the offices in the Golden Gate National Recreation Area in California, the post office at Alcatraz Island dates from 1874 when it was a military installation, through 1963 when the prison closed. Another side story offers background on the USS *San Francisco* and its action at Guadalcanal. Today its bridge wings are preserved in a monument to the ship located at Lands End in the Golden Gate National Recreation Area.

This book is wonderfully illustrated with postal history items cancelled at many of the park post offices. Occasionally there are historic photos of the offices. Most of the covers and postcards shown are older items but a few first day covers and last day cancels are shown.

The book is well documented. The author uses the convention of many technical books of listing the footnoted references at the end of each chapter. In addition to these immediate citations there is an 11-page bibliography.

A list of abbreviations used, a listing of the national parks by state, and an alphabetical index of the parks and post offices complete this very thorough and absorbing work. Collectors of United States national park postal history now have a great resource to pursue their searches.





Tear Sheet List

FWPL BOOKSTORE
 P.O. Box 2219
 Sunnyvale, CA 94087

One of the policies of the FWPL is to inform members about the availability of duplicate material. Any item listed here may be purchased by sending your payment to the address above. The funds received from sales help with operational expenses and go towards acquisitions we otherwise could not obtain. Please remember to add the postage costs: 49-cents for each 4 pages ordered.

A growing list of tear sheets is available through our website at www.fwpl.org/tearsheets.htm, which also links to tear sheets on Leonard hartmann's Internet website: www.pbbooks.com

GENERAL WORLDWIDE SUBJECTS

AEROPHILATELY

13179 Souvenir "Entire" Of The Gordon Bennett Balloon Race, 1937. 1pp ill 1937 .50

13171 The Autogiro. Blank, A.J. 1pp ill 1935 .50

13180 The Mighty Douglas. (Donald W. Douglas of Douglas Aircraft) Smith, C.E. 1pp 1958 .50

ANTARCTICA

13221 Antarctica. Morris, G.N. 6pp ill 1948 3.00

13220 The Battle of Stamps in the Antarctic. Horney, W.R. 5pp ill 1948 2.50

CINDERELLA MATERIAL

13162 A Stamp Is A Stamp—Or Is It? Olcheski, B. 2pp ill 1993 1.00

COLLECTING

13174 A Collector's Rx For The Doldrums. Tauber, L.E. 3pp ill 1997 1.50

13152 A Philatelic Medley. Tower, W.H. 9pp ill 4.50

13173 About The Stamp Collectors Most-used Tool. (Magnifying Glasses) Wylie, W.W. 4pp ill 1965 2.00

13194 Folklore or Fact? Herst, H. 1pp 1987 .50

13193 Postmarks or Stamps? Foster, H.D. 2pp 1939 1.00

13168 Principles of Philately. Myer, J.N. 2pp 1940 1.00

13199 Starting a New Collection. Dehn, R.A. 3pp 1979 1.50

COLOR

13192 Yellow & Orange Stamps. Anderson, R.C. 1pp 1953 .50

CONDITION AND DESCRIPTION

13196 Stamp Repairing. Warner, F. 2pp 1955 1.00

DEFINITIVE ISSUES

13195 Blowing Your Own Posthorn. The Challenge of the Definitives. Mueller, B.R. 2pp ill 1987 1.00

DESIGNS

13200 The Satin & Lace School of Stamp Design. Mueller, B.R. 2pp Unk 1.00

EXHIBITING

13222 How To Prepare Exhibits. Voorhees, R.R. 1pp 1956 .50

LITERATURE

13172 A Student Guide to Past "Annuals". (Stamp Collectors Annual) 2pp 1935 1.00

13176 New Books For Specialized Collectors. Lawrence, K. 3pp 1997 1.50

13149 The Matter of the Superfluous Stamp. (Mystery) Hammer, D.L. 4pp ill 1996 2.00

METERED MAIL

13181 Forerunners of The Mailomat Meter Machines. Simon, W. 2pp ill 1995 1.00

PAPER

13201 Notes on Paper. Alumnus 3pp ill 1944 1.50

POSTAL HISTORY

13177 In the Days Before The "Penny Black". Herst, H. 3pp ill 1995 1.50

13197 "Neither Rain Nor Snow..." McAlister, C. 3pp ill 1953 1.50

13182 Unrecognized Coil Stamps. Rich, S.G. 2pp 1958 1.00

PRODUCTION - INK

13158 X-Ray Philately...Printing Inks. Pollack, H. & Bridgman, C.F. 5pp ill 1952 2.50

PRODUCTION - PAPER

13169 Silk Thread Paper & Dickinson. Rich, S.G. 4pp ill 1941 2.00

PRODUCTION - PERFORATIONS

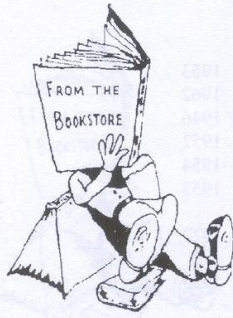
13175 Perforations, Their Importance Explained. Lawrence N.S. 7pp 1923 3.50

& Some Views On Perforations. Chappell, A.L.

THEFT PREVENTION

13198 How to Burglar-proof Your Store. Perry, P.M. 2pp 1975 1.00

TOPICAL COLLECTING – ANIMALS - CATTLE					
13204	The Bovine World.	Bourgraf, G.	1pp	ill 1955	.50
TOPICAL COLLECTING – ANIMALS - HORSES					
13207	I've Gotta Horse.	Last, B.	4pp	ill 1979	2.00
13183	The Derby.	Bourgraf, G.	1pp	ill 1956	.50
TOPICAL COLLECTING - ARCHAEOLOGY					
13217	The Great Temple Revealed. Giovanni Battista Belzoni at Abu Simbel. (Nubian Monuments)	Ryan, D.P.	15pp	ill Unk	6.25
TOPICAL COLLECTING – ART AND ARTISTS					
13202	The Artist Ferdinand Delacroix.	Papa, J.S.	5pp	ill 1967	2.50
TOPICAL COLLECTING - ASTRONOMY					
13165	Halley's Comet Is Back!	Crown Agents	2pp	ill 1986	1.00
TOPICAL COLLECTING - BIRDS					
13203	Birds on Stamps.	Bird, S.	2pp	1939	1.00
13205	The Thanksgiving Bird on Postage Stamps.	Lanspeary, P.J.	2pp	ill 1995	1.00
TOPICAL COLLECTING - CHRISTMAS					
13170	Wooden Decorations For The Holidays.	Short, S.	5pp	ill 1995	2.50
TOPICAL COLLECTING - DISNEY					
13161	The Disney World of Stamps.	Arnold, J.	4pp	ill 1979	2.00
TOPICAL COLLECTING - FISH					
13206	Angling for Fishing Topicals. Fresh Water or Salt Water.	Bleakley, J.R.	1pp	ill 1995	.50
TOPICAL COLLECTING - FUNGI					
13215	Fungi & Postmarks.	Pickering, V.	1pp	ill 1984	.50
TOPICAL COLLECTING - INSECTS					
13163	Insects On Stamps.	Obojski, R.	2pp	ill 1978	1.00
TOPICAL COLLECTING - MALARIA					
13208	Malaria Eradication.	Johnson, D.R.	2pp	ill 1961	1.00
13210	Pharmacy & "Malaria Eradication" Stamps.	Szencer, H.K.	2pp	ill 1962	1.00
13209	The Fight Against Malaria.	Steffen, A.N.	2pp	ill 1962	1.00
TOPICAL COLLECTING - MASONS					
13211	Andrew Jackson, A Mason.	Needham, R.M.	1pp	ill 1953	.50
13185	John Paul Jones, A Mason.	Needham, R.M.	1pp	ill 1957	.50
13184	Masonic Flavored Precanceled Stamps.	Dye, G.W.	1pp	1958	.50
TOPICAL COLLECTING - MEDICINE					
13214	Ambulances Are Challenging Medical Topical.	Wilson, T.	2pp	ill 1995	1.00
13159	Explorer Physicians.	Wilson, T.	4pp	ill 1997	2.00
13213	Health a Broad Topical Area.	Krause, B.	1pp	ill 1995	.50
13212	Medical Philately.	Herst, H.	2pp	1987	1.00
TOPICAL COLLECTING - MONEY					
13178	The Numismatic Heritage of Stamp Design.	Mueller, B.R.	3pp	Unk	1.50
TOPICAL COLLECTING – MUSIC AND MUSICIANS					
13186	On Music & Stamps.	Smith, F.C.	1pp	1957	.50
13187	On Music & Stamps. Maurice Ravel.	Smith, F.C.	2pp	ill 1957	1.00
13216	Variations on a Musical Theme.	Moore, H.	2pp	ill 1996	1.00
TOPICAL COLLECTING - RELIGION					
13188	Bits of Church History on World Postage. Johannes Gutenberg & The Bible.	Berger, E.	1pp	ill 1957	.50
13218	Missionaries.		2pp	ill 1990	1.00
13189	Official Catholic Directory. Philatelic Litany of the Saints-Additional Saints Philatelically Canonized Since March 1955.	Cech, M.F.	2pp	ill 1957	1.00
13219	Official Catholic Directory. Priests on Stamps.	Cech, M.F.	2pp	ill 1956	1.00
TOPICAL COLLECTING – SPORTS AND RECREATION					
13160	Baseball—America's Game ...On Stamps.	Milliman, D.	2pp	ill 1986	1.00
TOPICAL COLLECTING – UNIVERSAL POSTAL UNION					
13190	Formation of the Postal Union.	Velsor, C.F.	1pp	1938	.50
13164	Supplementing a UPU Collection.	Zinsmeister, M.C.	4pp	ill 1954	2.00
TOPICAL COLLECTING - VOLCANOES					
13191	Volcanoes on Stamps.	Freiburghaus, J.G.	2pp	ill 1959	1.00
TOPICAL COLLECTING - WAR					
13167	Postal History Can Be Personal--& Poignant. (WW II)	Haney, S.L.	3pp	ill 1994	1.50
13166	Remembering The Rapido. (WW II)	Glantz, E.	6pp	ill 1994	3.00



Tear Sheet List

FWPL BOOKSTORE
P.O. Box 2219
Sunnyvale, CA 94087

One of the policies of the FWPL is to inform members about the availability of duplicate material. Any item listed here may be purchased by sending your payment to the address above. The funds received from sales help with operational expenses and go towards acquisitions we otherwise could not obtain. Please remember to add the postage costs: 49-cents for each 4 pages ordered.

A growing list of tear sheets is available through our website at www.fwpl.org/tearsheets.htm, which also links to tear sheets on Leonard Hartmann's Internet website: www.pbbooks.com

UNITED STATES - CALIFORNIA					
15358	Book Review. The Fresno & San Francisco Bicycle Mail of 1894 by Lowell B. Cooper.	Hahn, C.M.	3pp	1985	1.50
UNITED STATES - CANAL ZONE					
15299	Stamps in the Senate.	Herst, H.	1pp	ill 1986	.50
UNITED STATES - HAWAII					
15338	Hawaiian Hoodwinkers.	Rooke, H.F.	2pp	ill 1969	1.00
UNITED STATES - NEVADA					
15359	Contents of a Letter. (Pick Handle Gulch, April 20, 1880, postmarked CANDALARDA, NEVADA)	Willcut, J.	2pp	ill 1980	1.00
UNITED STATES - NEW YORK					
15323	New York City Hotel Stationery. Postal Rates, Usages, Destinations.	Epstein, E.B.	2pp	ill 1992	1.00
15339	Stamps Trace History of New York's City College.	Durnin, R.G.	2pp	ill 1989	1.00
UNITED STATES - PENNSYLVANIA					
15360	Postal History of Frankford, Phila. Co. Pa.	Stets, R.J.	4pp	ill 1981	2.00
UNITED STATES - TERRITORIES					
15324	Marshall Islands Unissued Stamps.	Negus, J.	3pp	ill 1985	1.50
UNITED STATES AIR MAIL					
15374	Flying Boats Hopped the Pacific. (China Clippers)	Armstrong, D.	4pp	ill 2005	2.00
15344	On the Record. Moon Landing. Scott C76.	Faries, B.	12pp	ill 1972	5.50
UNITED STATES COLLECTING					
15362	A New Approach to the Collecting of U.S. Stamps. (U.S. Registry System)	Mueller, B.R.	2pp	Unk	1.00
UNITED STATES COVERS					
15355	Bat Masterson Cover Found in Family Papers.	Haeseler, R.	3pp	ill 1996	1.50
15347	Cover Touches Edge of History. Validates Advice to Look Inside.	Koenig, D.	1pp	ill 1989	.50
15346	Ugly Duckling? Uncovering the Truth Behind a 'Rare & Desirable' Cover.	Hahn, C.M.	2pp	ill 1983	1.00
UNITED STATES ERRORS AND VARIETIES					
15317	Missing Color Variety Found on Space Stamp. Scott 1331.	Chemi, J.M.	1pp	1968	.50
UNITED STATES EXPRESS COMPANIES					
15318	California—"Private Expresses".	Parker, W.R.	2pp	1951	1.00
UNITED STATES FIRST DAYS					
15348	Case Study in Postal History Expertizing: A Rare First Day Cover.	Hahn, C.M.	25pp	ill 1986	8.75:
UNITED STATES FORGERIES AND COUNTERFEITS					
15332	New Forgery of 'KANS' Overprint.		1pp	ill 1994	.50
UNITED STATES FREE FRANKS					
15319	Free Franks of United States Mail of Distinguished Americans.	Stevens, T.A.	1pp	ill 1951	.50
15333	Members of the Continental Congress Free Franks.		1pp	ill 1933	.50
UNITED STATES GRILLS					
15349	Differentiating Between the "E" & "Z" Grills of 1867.	McNabb, G.C.	2pp	ill 1930	1.00
UNITED STATES LOCALS AND PRIVATE POSTS					
15350	Bayonne City Dispatch Company.	Kaufmann, R.G.	2pp	ill 1989	1.00
15351	Local Posts in Atlantic City.	Mathewson, C.C.	1pp	ill 1989	.50
UNITED STATES MARITIME MAIL					
15352	A Book Review. North Atlantic Mail Sailings 1840-75, by Walter Hubbard & Richard F. Winter.	Neufeld, G.H.	1pp	1989	.50
15336	Transatlantic Theme & Variations.	Epstein, E.B.	6pp	ill 1986	3.00

UNITED STATES MILITARY MAIL					
15321	The A.E.F. Post Offices During the World War. (WW I)	Turney	2pp	1933	1.00
15354	U.S. Navy Ship Cancelations.	Locy, F.E.	3pp	ill 1934	1.50
15320	War Covers From Trinidad, British West Indies. (WW II)	Elson, J.D.	2pp	ill 1960	1.00
15353	WW II: Seabee Covers, Navy 8000 Series.	Graham, R.B.	3pp	ill 1996	1.50
UNITED STATES OFFICES ABROAD					
15370	Uncommon Use of Common Stamps, United States Used in Haiti.	Sellers, F.B.	2pp	ill 1965	1.00
UNITED STATES POST OFFICE SEALS AND LABELS					
15337	Dummy Stamps Need Study, Cataloging.	Shaulis, S.A.	2pp	ill 1989	1.00
UNITED STATES POSTAL HISTORY					
15357	From Polk to Johnson.	Rich, S.G.	3pp	ill 1951	1.50
15334	Manhattan Project Penalty Envelopes.	Stendel, R.C.	4pp	ill 1992	2.00
15356	U.S. Postal Service Before Postage Stamps.	Cerini, E.A.	3pp	1952	1.50
UNITED STATES POSTAL MARKINGS					
15335	An Early Censor Mark-1814.	Tower, W.H.	1pp	ill 1944	.50
15345	Postmaster's Whittling Gave Us Prized Cancels. (Waterbury Cancels).	Sente, M.J.	2pp	1983	1.00
UNITED STATES POSTAL STATIONERY					
15361	Revalued 6 Cent Air Mail Envelopes. (Oct. 1, 1946)	Sloane, G.B.	1pp	1946	.50
UNITED STATES PRODUCTION - PERFORATIONS					
15327	U.S. Perforations.	King, B.S.	1pp	1933	.50
UNITED STATES PRODUCTION - PRINTING					
15326	Stamps of Different Sizes Made From the Same Master Die.	Johl, M.G.	1pp	1933	.50
UNITED STATES PROVISIONALS AND FORERUNNERS					
15328	Five Cent New York Postmaster's Stamp Unique Pair With Signature "M. M. Jr." Newly Discovered.	Sloane, G.B.	2pp	ill 1933	1.00
UNITED STATES REVENUES					
15363	A \$250 Conveyance-Entry of Goods Provisional.		2pp	ill 1979	1.00
15369	Design Doubling on U.S. Private Die Stamps.	Riley, R.F. & DeKay, W.R.	11pp	ill 1979	5.25
15364	Plate Varieties. Scott R5b. Flaws from Plate Wear.	Giacomelli, A.	1pp	ill 1979	.50
15365	Plate Varieties. 2 Cent USIR of 1864 Double Transfer.	Giacomelli, A.	1pp	ill 1979	.50
15368	Provisional Opium Stamp?	Scoville, O.D.	1pp	ill 1979	.50
15366	Stateside 2. (Federal Liquor Stamp Used in Pennsylvania)	Lesher, R.	1pp	ill 1979	.50
15367	U.S. Customs Stamps for Alcoholic Beverages.	Scoville, O.D.	3pp	ill 1979	1.50
UNITED STATES REVENUES – DUCK STAMPS					
15316	Miscue Drained Color From 1978 California Stamp.	Dumaine, B.	2pp	ill 2001	1.00
UNITED STATES SPECIAL DELIVERY					
15325	40 Years of U.S. Special Delivery Stamps.	Bates, C.W.	24pp	ill 1940	8.50
UNITED STATES SPECIALIZED - 1857					
15329	The Three Cent 1857—What to Look for in the Perforated Issue.	Cabeen, R.M.	9pp	ill 1946	4.50
UNITED STATES SPECIALIZED - 1890					
15330	1890 1 Cent Ultramarine, Plate Defect.	Sloane, G.B.	1pp	ill 1933	.50
UNITED STATES SPECIALIZED – 1918-1920					
15331	1918-20 2 Cent Offset Printing Type.	Sloane, G.B.	1pp	ill 1933	.50
UNITED STATES SPECIALIZED - 1932					
15371	Plate Varieties of the Bicentennial Issue.	King, B.S.	4pp	ill 1933	2.00
UNITED STATES SPECIALIZED - 1933					
15372	Plate Flaws Found on Byrd Stamps. Scott 733	Holden, G.H.	1pp	ill 1934	.50
UNITED STATES SPECIALIZED - 1967					
15342	On the Record. Christmas 1967. Scott 1336.	Faries, B.	7pp	ill 1969	3.50
15340	On the Record. Finland Independence. Scott 1334.	Faries, B.	5pp	ill 1969	2.50
15343	On the Record. Mississippi Statehood. Scott 1337	Faries, B.	6pp	ill 1969	3.00
15341	On the Record. Thomas Eakins. Scott 1335.	Faries, B.	9pp	ill 1969	4.50
UNITED STATES SPECIALIZED - 1969					
15373	On the Record. John Wesley Powell. Scott 1374.	Faries, B.	9pp	ill 1971	4.50
TOPICAL COLLECTING - FLAGS					
15300	Old Glory.	Sweet, T.D.	1pp	ill 1961	.50
TOPICAL COLLECTING - VALENTINES					
15322	Valentine in the Album.	Geilfuss, G.L.	4pp	ill 1950	2.00

WSS-NY 2016 Exhibition Bulletin Released

January 12, 2015
For Immediate Release

Information important to potential exhibitors is now available with the release of the Bulletin by World Stamp Show-NY 2016, taking place in 15 months from May 28-June 4, 2016 at the Javits Center in New York City.

The 60 page full-color booklet contains complete details about exhibit entry requirements, the application and acceptance process, and costs involved. It also covers the GREX (General Regulations for Exhibitions) held under the patronage of the Fédération Internationale de Philatélie, the 91 member international body considered as the “United Nations” of the hobby.

Three members of the WSS-NY 2016 team collaborated on the work. Stephen D. Schumann, the show’s Commissioner General, provided much of the regulatory section. Steven J. Rod, show Vice President, concentrated on the cultural section, while Design Chairman Niko Courtelis focused on the graphics and layout.

Exhibits among the 3,800 competitive frames are allowed in all 13 FIP-recognized philatelic categories. For the first time ever, First Day Cover exhibits will be accepted under the Experimental Exhibiting Group. One, five or eight frame exhibits may be entered, the latter reserved for previous international large vermeil or higher winners. At least 20% of WSS-NY 2016 entries will be allocated to first-time international exhibits. Literature entries are additionally welcome.

To facilitate the application process, all participating countries appoint national commissioners who distribute and receive exhibit paperwork and coordinate entries with the event’s Commissioner General. The two United States commissioners have just been named, Dr. Yamil Kouri of Massachusetts for exhibitors east of the Mississippi and Mrs. Vesma Grinfelds of California for exhibitors in the West. Exhibitors in other countries should consult their national philatelic organization for commissioner appointees. They will also appear on the WSS-NY 2016 web site with contact information when known. Updates will only appear online.

Full show information, along with the electronic version of the Bulletin, is online at <http://www.ny2016.org>. Also see the exhibition’s Facebook, YouTube and Pinterest sites.

Thomas M. Fortunato
Chairman, Marketing & Public Relations
28 Amberwood Place
Rochester, NY 14626-4166
(585) 225-6822 evenings and weekends
thomas.fortunato@ny2016.org
stamptmf@frontiernet.net

WSS-NY 2016 Offers New Membership Level

February 3, 2015
For Immediate Release

A new “Liberty Platinum” category for donations between \$2,501 and \$9,999 has been added to World Stamp Show-NY 2016’s list of membership levels.

Donna Richardson, the exhibition’s Executive Director explained, “In working with our Leadership Circle and Liberty Club Chairs, we became aware of a notable gap in our donor levels. Together with their input, and that of the philatelic community, we created our ‘Liberty Platinum’ level to properly recognize and reward such major donations.”

Each of the now seven contribution levels comes with its own list of premiums ranging from exhibit frame Honor Plaques to dinner tickets to the Awards Palmars. These can be seen online at <http://www.ny2016.org/SubMenu/Memberships.aspx?id=503>. It is also possible to donate through PayPal or a major credit card on the same web page. Most membership levels have the option to split the donation by making two equal payments, one now and another in January, 2016.

To date over \$400,000 has been donated outright or pledged by philatelists in the U.S. and other countries in support of WSS-NY 2016. As an IRS recognized 501(c)(3) organization, Americans who itemize are entitled to use their donation as a tax deduction to the fullest extent of the law. Donations of any amount are welcomed.

World Stamp Show-NY 2016 takes place May 28 to June 4 at the Javits Center in New York City. Visit the show’s web site at <http://www.ny2016.org> and check out our daily Facebook, Pinterest and Twitter postings.

Thomas M. Fortunato
Chairman, Marketing & Public Relations
28 Amberwood Place
Rochester, NY 14626-4166
(585) 225-6822 evenings and weekends
thomas.fortunato@ny2016.org
stampmf@frontiernet.net

WSS-NY 2016 President on APS Stamp Talk

February 4, 2015

For Immediate Release

World Stamp Show-NY 2016 President Wade Saadi was interviewed January 28 by host Nancy Clark in a recent live production of her well-known “APS Stamp Talk” WSRadio.com podcast. A link to the broadcast can be found at http://www.ny2016.org/SubSubMenu/NY_2016_President_Wade_Saadi_on_APS_Stamp_Talk.aspx?id=25. The first 30 minutes of the hour-long show dealt with WSS-NY 2016 details, in essence becoming a “State of the Show” report.

To date 134 of 204 dealer booths have been reserved, slightly ahead of estimates at this time. Overseas dealers typically book much closer to show time. Invitations to postal administrations have just gone out. The U.S. Postal Service is a major sponsor of the eight day show.

Exhibitors are pleased that the show’s Bulletin is now available. Copies should be requested from the exhibitor’s respective national commissioner.

Four major auction houses have been chosen to date. They include Auktionshaus Christoph Gärtner, Daniel F. Kelleher Auctions, Schuyler J. Rumsey Philatelic Auctions and Robert A. Siegel Auction Galleries. Up to two more official auctioneers may be selected.

Full show information can be found online at <http://www.ny2016.org>. Also see the exhibition’s Facebook, Twitter and Pinterest sites.

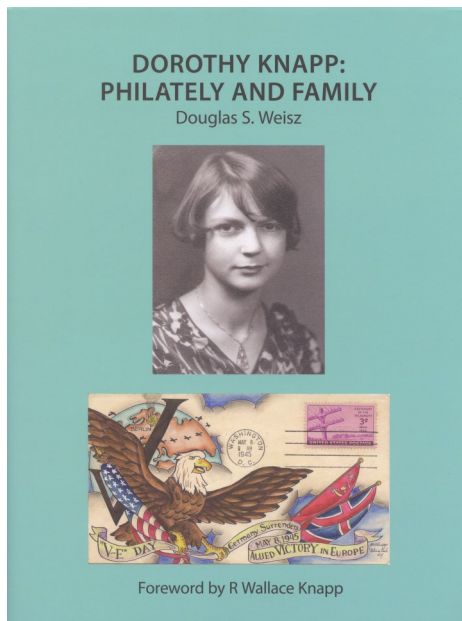
Thomas M. Fortunato
Chairman, Marketing & Public Relations
28 Amberwood Place
Rochester, NY 14626-4166
(585) 225-6822 evenings and weekends
thomas.fortunato@ny2016.org
stampmf@frontiernet.net

Book Review: *Dorothy Knapp: Philately and Family*
reviewed by Alan Warren

Dorothy Knapp: Philately and Family by Douglas S. Weisz. 312 pages, 8 ½ by 11 ¼ inches, casebound, dust jacket, self-published, McMurray, Pa., 2014. ISBN 978-0-692-24343-5, \$50 plus shipping from Douglas S. Weisz, PO Box 1458, McMurray PA 15317, or www.douglasweisz.com.

Collectors have long prized the cachet art of Dorothy W. Knapp. Information about the artist and her work has been limited to the book on Staehle and Knapp by M. Douglas Parks and various articles in the philatelic press. Cover dealer Doug Weisz and his wife Miriam have put together this definitive resource on Knapp which will help collectors seeking Knapp covers for the stamp issues they collect or for patriotic or special events covers that she created.

The Weisz book focuses on the hand-drawn and hand-painted covers of Dorothy Knapp. Her printed cachets were covered in the 1981 book by Parks. Doug Weisz was stimulated to compile this book when he acquired the extensive collection of Walter Jarrett, Dorothy's biggest customer. Starting with this huge grouping and working with collectors known to Doug as owning Knapp covers, this wonderfully illustrated monograph and keepsake was created to record the life work of one of the hobby's most celebrated artists.



Dorothy's son R. Wallace Knapp and his wife worked with the Weiszes to provide information and material for the profile of Dorothy at the beginning of the book. Evidence of her talent emerges from her college yearbook entry and her own personal journal and homemade books, hand lettered and illustrated.

Over 250 pages are devoted to illustrations of Knapp covers. Recognizing that many FDC cachets were add-ons, the covers are arranged in Scott numerical order with a suffix number if more than one design was created for a particular stamp issue. The stamp first day covers are followed by airmail issues, special delivery and official

stamps, and postal stationery.

The listing of patriotic covers begins with a set of 20 covers and their varieties, numbered by Dorothy. She even did some patriotics in black and white. Then follow World War II event covers for the declaration of war, D-day, V-E days in various European countries using the overrun countries issues, V-J day, and the renaming of the MacArthur and Nimitz West Virginia post offices.

Some international first day covers by Dorothy include ones for Canada, Malta, Bermuda, and the United Nations. Various U.S. and personal family event covers follow. Some illustrated album pages complete the story of her philatelic work. An index and references conclude the book.

Doug and Miriam Weisz have compiled a lovely handbook and catalog that serves not only as an important reference for collectors, but also as a tribute to the talented cachet artist and her life work.

**FRIENDS OF THE WESTERN PHILATELIC LIBRARY
MEMBERSHIP APPLICATION**

NAME _____ DATE _____
 STREET _____ NEW MEMBER _____ RENEWING _____
 CITY _____ PHONE () _____
 STATE/COUNTRY _____ ZIP _____ PROPOSED BY _____
 E-MAIL _____

What are your collecting interests?

What literature would you like to see in the Philatelic Library? name specific titles and authors, if possible.

Would you be willing to make a donation of this publication to the library?

Do you have experience or knowledge in any of the following areas that could benefit the library?

Philatelic Literature	Publications	Typing
Postal History	Publicity Writing	Computer Maintenance
Library Work/Cataloging	Philatelic Writing	Database Programming
Public Speaking	Photography	Computer Interface Networking
Public Relations	Art/Graphics	Translation (specify Languages)

MEMBERSHIP DUES AND DONATIONS

Please enroll me as a member of the Friends of the Western Philatelic Library, Inc.

Individual annual memberships, by calendar year, are: (all prices in USA \$)

Participating:	USA 20.00	Canada 22.00	Overseas (Air Mail) 28.00
Contributing:	USA 30.00	Canada 34.00	Overseas (Air Mail) 38.00
Other categories:	Life (no annual dues) 175.00	Life Overseas 200.00	Founder 1000.00

Enclosed: Membership _____ Donations _____ **Total** _____

Donations in any amount are appreciated. Donations to the Book Purchase Fund or Library Operation Fund may be specified. Please Note: All donations to the Friends of the Western Philatelic Library, above the membership amount, may be tax deductible! In appreciation to those who become a member at the Contributor level (or higher) may choose any book or literature on the "Bonus Book List" to be sent at no charge.

The Friends of the Western Philatelic Library, is an organization of philatelists assisting in the growth and maintenance of the Western Philatelic Library, located 40 miles south of San Francisco. The library is one of the largest public philatelic libraries in the United States today, containing over 3000 lineal feet of shelving for books, catalogs and bound periodicals, plus 48 drawers of unbound periodicals and 30 drawers of pamphlets with a 15 drawer index. We hope that you will want to join in the building of the future of the Western Philatelic Library. This can be done in many ways, as indicated by your offer to help with your time and talents or through donations of material. We need all types of philatelic publications, including books, catalogs and any other reference material. Any kind of literature which would be of use to beginner or advanced collector is desired. All donations will be acknowledged, and appropriate items will carry any attractive bookplate honoring its donor. Donations of material maybe directed to the Friends' Sunnyvale Post Office Box at low library postal rates.

Benefits of Membership include:

1. *The Bay Phil*, bi-monthly newsletter of Reviews, Tear Sheets, Book Lists and publishing announcements.
2. Complimentary listing of new and duplicate books available in the Philatelic Library.
3. Complimentary price lists of philatelic literature and tear sheets available from stock.
4. Complimentary catalogs of auctions of literature and stamps to be held by the "Friends".
5. A discount of 10% on purchases of duplicate literature.
6. Submission of your suggested list of specific titles of philatelic literature, or your donation of publications so that others may also increase their philatelic knowledge.
7. Members Buy/Sell ads in *The Bay Phil*.

BP 307



P.O. Box 2219 - Sunnyvale, CA 94087

ADDRESS SERVICE REQUESTED

