



# *The Bay Phil*

A publication of Friends of the Western Philatelic Library, Inc.,  
an organization of philatelists assisting in the growth and maintenance of the  
Western Philatelic Library, 3004 Spring Street, Redwood City, CA  
Mailing Address: FWPL, P.O. Box 2219, Sunnyvale, CA 94087-2219  
Telephone: (650) 305-9150

January/February 2016

Volume 47, No. 1, Whole Number 312  
ISSN 8756-5153

## **VOLUNTEER WORK AT LIBRARY!**

Due to popular demand one Saturday each month will be set aside for volunteers to visit the library and put in a few hours helping to work through our many tasks and piles of literature. The third Saturday of each month will be Volunteer Day. Here are the dates for 2016.

February 6 **OPEN HOUSE**

February 20

March 19

April 16

May 21

June 18

July 16

## **MEMBERSHIP NEWS**

### **Deceased**

**Robert A. D'Elia**

### **Moved**

### **New**

**Daryl Reiber, Life Member**

**Marci Jarvis**

## **Book Returns**

The WPL exists as a resource for everyone. The lending policy is very lenient for anyone borrowing books or other items. Most members appreciate this service and use it well, including returning the items in a timely manner. However, a few overextend their borrowing time and stretch it to the limit. It makes more work and problems to the few volunteers that we have who need to chase down delinquent borrowers and call them for returns that are sometimes **years** old. Please check any of your borrowed books and return them so others might benefit from them. The alternative is one we don't like: the limiting of borrowers who are chronic extenders, by denying their borrowing privilege.

## **In This Issue**

<b>Members - Deceased, Moved or New</b>	<b>1</b>
<b>Editor's Corner</b>	<b>2</b>
<b>Thanks for Your Fonations</b>	<b>3</b>
<b>Book Trview</b>	<b>5</b>
<b>WPL Open House</b>	<b>5</b>
<b>Tear Sheets</b>	<b>7-10</b>
<b>Membership Application</b>	<b>11</b>



Friends of the Western Philatelic Library, Inc.  
APS Chapter 836

Preserving Philatelic History for the Future



CHAIR	Stuart Levin stulev@ix.netcom.com
V.C. - ACQUISITIONS	Roger Skinner rogerskinner96@yahoo.com
V.C. - MEMBERSHIP	Dick Clever richard@asiaphilatelics.com
SECRETARY	
TREASURER	Jo Skinner skinnerjo80@yahoo.com
DIRECTOR	
DIRECTOR	
DIRECTOR	
DIRECTOR	
DIRECTOR	
---Staff---	
WEB MASTER	
BINDERY	
BAY PHIL EDITOR	Richard M. Hanchett editorofbayphil@cox.net
Postal Address	6 Rainbow Court Warwick, RI 02889-1118
Library Hours:	Tuesday Noon to 5 PM Wednesday 1PM to 4PM and 5PM to 7PM Friday 10AM to 5PM Saturday Noon to 5PM
Web Site	<a href="http://www.fwpl.org">www.fwpl.org</a>
Tear Sheet listing at Leonard Hartmann's Internet Web Site	<a href="http://www.pbbooks.com">www.pbbooks.com</a>

## Editor's Corner

Have you made your plans yet for attending WESTPEX 2016 and NY 2016?

Time is running out, especially for reasonably priced New York hotels. The Bayshore Marriott always has a block of rooms for WESTPEX at special prices. Book one before the rooms and special prices are gone.

Pages 4,5 and 6 give you information about the Open House to be held at the WPL in February. Tours, sales and free food—what could be better?

Besy Wishes to all for a Happy, Healthy and Prosperous New Year

Richard M. Hanchett, Editor  
[editorofbayphil@cox.net](mailto:editorofbayphil@cox.net)

## Ongoing Library Support

The Sunnyvale Public Library provides all of our facilities at the Raynor Activity Center at no charge to the FWPL or patrons using the library. This is a major factor in our ability to stay in operation and enables us to devote the funds of FWPL to maintaining and building the collection itself.

## BOARD MEETINGS

Regular Board Meetings are open to all FWPL members. Meetings begin at 4PM the fourth Wednesday of each month at the WPL in Reedwood City. Feel free to drop in and see what is going on. You might call President Stuart Leven, (408) 978-0193 beforehand to confirm details of location, time and date.

## Mission Statement

The Western Philatelic Library exists to enhance the preservation and dissemination of philatelic knowledge by acquiring, organizing, interpreting and distributing information resources in a globally networked community.

## WPL Vision Statement

We will be known as setting the standard for providing a responsive, convenient gateway to philatelic knowledge.

Our Commitments:

- To build and conserve a world-class collection of printed, electronic and other media;
- To support, extend and enrich the pursuit of knowledge and enjoyment through stamp collecting;
- To provide access and support for beginners, hobbyists, specialists, writers and postal historians;
- To promote knowledge through public educational events and displays; and
- To collaborate and cooperate with other libraries.

## THE BAY PHIL

*The Bay Phil* is the bi-monthly newsletter of the Friends of the Western Philatelic Library (FWPL), a non-profit organization. The contents of *The Bay Phil* are copyrighted © 2016 by FWPL. It has always been our policy that material can be used in whole or in part by individuals or other non-profit organizations, provided credit is given to *The bay Phil* and the individual authors of the reproduced material. A copy of the publication in which the material is printed is requested to be provided for our archives.

## THANK YOU FOR YOUR DONATIONS

East Bay Collectors Club () various albums with covers and stamps  
Laurel van Meren (CO) various philatelic journals  
Nancy Swan (OR) various items of the Fine Arts Philatelist  
Neil Shapiro (CA) Scott catalogues and supplements  
D & P Stamps (CA) various Scott albums with stamps  
Verma Grinfelds (CA) various stamp and auction catalogues  
James Oerding (CA) various philatelic journals and auction catalogues  
Hideo R. Yokota (CA) bound exhibition scan  
Anatony Chlenov (CA) various philatelic journals  
Herbert K. Nishio (CA) various philatelic newsletters and stamps  
William Krirbel (PA) philatelic journal and various tearsheets  
Peter Hausknecht (CA) various philatelic journals, albums and stamp supplies  
Allen Klein (CA) various philatelic journals and publications  
Clayton Wallace (CA) various philatelic publications and journals and auction catalogues  
Wayne Menuz (CA) various philatelic periodicals and books and auction catalogues  
Michael S. Hart (CA) non-philatelic magazines  
Dr. Edward Liston (CA) various auction catalogues  
Paul Swierstra (CA) various auction catalogues  
Charles Gherman (CA) various philatelic publications, catalogues and stamps  
Charles Drucker (CA) various auction catalogues  
Stuart Leven (CA) various philatelic publications and auction catalogues  
Greg Mirsky (CA) various philatelic publications and auction catalogues

Special thanks to Greg Cykeman for a donation of 30 American Stamp dealer magazines and also to Ernesto Cuesta President of International Cuban Philatelic Society for 2 replacement copies of the “Journal of Cuban Philately”.

## BUILDING FUND CONTRIBUTORS

**THANK YOU** to all who contributed to the Building Fund. We are most grateful for the generous donations from **WESTPEX**, The United Postal Stationery Society and donations given in Memory of Robert A. D’Elia.

We also thank the following members; Joanne Berkowitz, M.D., Stanley M. Bierman, M.D., John H. Bloor, Richard Clever, Wallace A. Craig, Ernesto Cuesta, Douglas Daetz, Dennis Dengel, Dr. R. J. Di Blasi, David Dirkes, Charles Drucker, Dale and Edie Eggen, Sidney Epstein, Harold Fates, Jr., Jorge Gaj, Inman G. Gallogly and Gloria Linder, Mary-Hill Gleason, James T. Hays, Jr., Gary G. Hendren, Tom Hirschinger, Yvonne Jarkowski, Edward and Judy Jarvis, Marci Jarvis, Hugh Lawrence, Robert J. Lazzaretto, William H. Lenarz, Ken Lewetzow, Eduardo H. Martino, David McNamee, William R. Mitchell, Roy Mollard, Vernon R. Morris, Jr. M.D., Thomas F. Olson, Paul Ortega, Larry C. Parks, M.D., Daryl Reiber, Richard Rosenthal, Paula Sager, Peter Sargent, W. J. Schlitt, C. Eric Seedorff, George V. Shalimoff, Boris Sheykhetov, Roger and Jo Skinner, Sandy Stover, Roy Teixeira, H. A. Trenchard, Mark R. Tyx, Yvonne Wagener and John S. Weigle for their generous donations and for their ongoing support of the Western Philatelic Library.

Jo Skinner

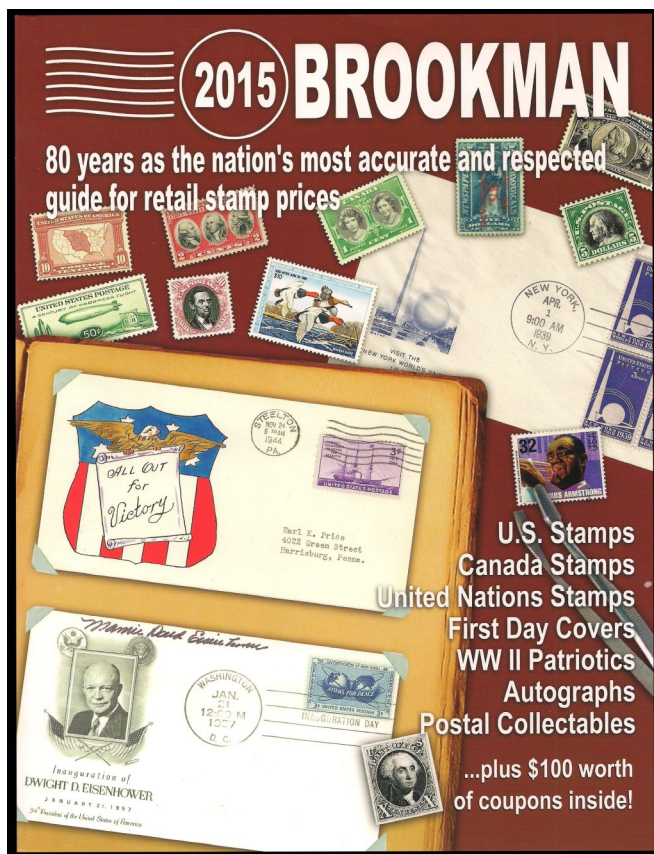
## Books Review: 2015 *Brookman* by Peter Martin

**2015 *Brookman* edited by David S. Macdonald. Bedford, N.H.: Brookman/Barrett & Worthen, 2014. 416 pages, 8.5 by 11 inches, color illus., perfect or spiral bound. Available for \$35.95 (perfect) or \$39.95 (spiral) plus \$5 P&H from: Brookman/Barrett & Worthen, 167 So. River Rd. Unit #3, Bedford, NH 03110; Phone (800) 332-3383.**

The 2015 *Brookman* was released late last year and, as with previous editions covers English speaking North America, including the United States (with territories and possessions such as Hawaii, Puerto Rico, Canal Zone, Marshall Islands, Micronesia and Palau), Canada and United Nations.

Brookman also provides expanded coverage for U.S. back of the book issues, U.S. first day covers, World War II and Korean War Patriotics, postal collectibles and autographs. They use Scott catalog numbers throughout by agreement with Scott Publishing Company.

The standard format consists of two-column listings with some three-column pages. Like other recent editions, many of the color images are quite dark, especially for modern issues, but they are still useful references. Individual stamp images are provided for most major categories. but others only have selected images.



Brookman is really a retail price list used by Brookman/Barrett & Worthen, Brookman Stamp Company and a number of stamp dealers around the country. Prices are given for used and unused stamps, often further separated by condition. U.S. first day covers have their own introduction with listings that start with Scott 5A. Issues for the 1920s and 1930s include prices for all official cities. The first cachets of major cachetmakers are interspersed.

The postal collectibles section includes such items as souvenir cards, souvenir pages and commemorative panels.


Publisher Arlene Dunn reports that: "Collector interest in first day covers is in the more elusive 1920 to early 1930s first days. Rare material sells immediately, both in auction and in dealers stocks. As in the past, interest in World War II Patriotics remains strong."

Each book contains \$100 worth of coupons and a free one-year subscription to the quarterly *The Brookman Times*.



# WPL Open House February 6: 11 AM to 5 PM

## Come See the New Home of Your Library!



**Western Philatelic Library**  
a non-profit corporation

**GRAND OPEN HOUSE**

**Book Sale - 50% off**  
**Stamps & Collections for sale**

**Saturday February 6, 2016 11 am - 5 pm**

**Refreshments & Matching Contributions**  
**provided by WESTPEX**

The Grand Opening of the NEW Western Philatelic Library is being sponsored by WESTPEX on February 6. The WPL has been freshly refurbished by volunteers with new library study tables, WiFi, and fresh paint inside and out. Special refreshments will be served, and attendees will have access to surplus books and stamp collections donated for resale. WESTPEX has pledged to match our sales revenue dollar for dollar to raise funds.

Attractive building signage will greet visitors looking for the library, thanks to donations by **Stuart Leven**, **David McNamee** and **Roger Skinner**.

Inside, the walls have been tastefully decorated with philatelic-related art, and the two bathrooms sparkle, thanks to **Roy Teixeira** and **Ed and Judy Jarvis**.



New building signs for the Western Philatelic Library



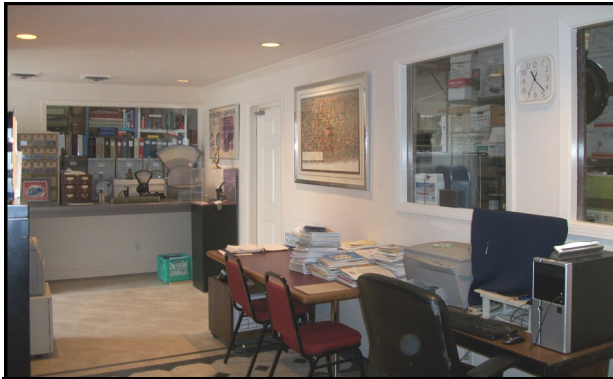
Work tables are convenient to the extensive collection of books, bound philatelic journals and pamphlets



The Western Philatelic Library has employed an intern in Library Science, and the intern has made many improvements to transform the library into an easy to use collection for everyone. Rows are labeled and neatly organized. No more overcrowding!

# More Scenes Inside the New WPL

Article Text by David McNamee, Pictures by Roy Teixeira



The front office sparkles with new paint thanks to Roy, and the philatelic wall decorations were chosen from a little-known WPL cache of all sorts of philatelic-themed items that are finally given space to be seen

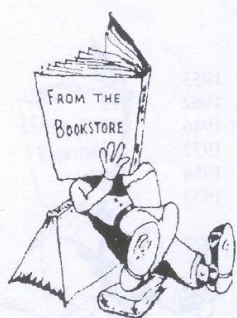


As journals and newsletters come into the Library, they are sorted in these bins and then further sorted into shelf bins by title until enough of the run can be sent to the bindery and added to our collection.



Ed and Judy Jarvis “adopted” the two bathrooms, and Roy Teixeira provided the labor to spruce them up for “company.” Roy is shown taking a picture so that we can show you how nice they came out.





# Tear Sheet List

FWPL BOOKSTORE  
P.O. Box 2219  
Sunnyvale, CA 94087

One of the policies of the FWPL is to inform members about the availability of duplicate material. Any item listed here may be purchased by sending your payment to the address above. The funds received from sales help with operational expenses and go towards acquisitions we otherwise could not obtain. Please remember to add the postage costs: 49-cents for each 4 pages ordered.

A growing list of tear sheets is available through our website at [www.fwpl.org/tearsheets.htm](http://www.fwpl.org/tearsheets.htm), which also links to tear sheets on Leonard hartmann's Internet website: [www.pbbooks.com](http://www.pbbooks.com)

<b>UNITED STATES - CALIFORNIA</b>					
15486	The Miners Ten Commandments.	Pierce, H.M.	1pp ill	1949	.50
<b>UNITED STATES - HAWAII</b>					
15488	Hawaii's Queen Liliuokalani Credited as Composer of Anthem. (Aloha Oe)	Scott, W.F.	1pp ill	1950	.50
15487	The Hawaiian Numerals. & Further Notes on the Hawaiian Numerals.	Crocker, H.J. Luff, J.N.	7pp	1902	3.50
<b>UNITED STATES - NEBRASKA</b>					
15489	Willa Cather & Red Cloud, Nebraska.	Beeranstrauch, A.	1pp ill	1973	.50
<b>UNITED STATES AUCTIONS</b>					
15472	Realizations at Sale of the Henry H. Clifford Collection.	Lindquist, H.L.	2pp	1969	1.00
<b>UNITED STATES CIVIL WAR</b>					
15473	Postal Vestiges of the Civil War.	Barnhart, R.E.	3pp ill	1978	1.50
<b>UNITED STATES CIVIL WAR - CONFEDERACY</b>					
15507	United States Stamps Used in the Confederacy.	Malpass, G.N.	5pp ill	1961	2.50
<b>UNITED STATES COILS</b>					
15444	Jefferson Memorial Coil Imperforate. Scott 1520b.		1pp ill	1974	.50
15445	New U.S. Coil Precanceled For Use on Bulk Mailings. Scott 1515.		1pp ill	1974	.50
<b>UNITED STATES COLLECTING</b>					
15481	Never a Dull Moment in U.S.	Kinne, H.L.	2pp	1953	1.00
<b>UNITED STATES COVERS</b>					
15474	Stampless Covers.		2pp ill	1972	1.00
<b>UNITED STATES ERRORS AND VARIETIES</b>					
15476	Freaks and Oddities.	Schiff, J.C.	2pp ill	1987	1.00
15446	New Startling Variety Discovered. Scott 516 Partial Double Impression.	Schiff, J.C.	1pp ill	1992	.50
15475	V For Variety. 6 Cent Olympic Games. U.S. No. 1460.		1pp ill	1972	.50
<b>UNITED STATES EXPRESS COMPANIES</b>					
15477	Chips of Wells Fargo & Co.	Eisner, M.D.	2pp	1949	1.00
<b>UNITED STATES EXPRESS MAIL</b>					
15478	My Most Interesting Western Express Frank.	Phillips, W.W.	1pp ill	1949	.50
<b>UNITED STATES FIRST DAYS</b>					
15449	Special Issues Creates First Day Demand. (Reprint of article from Linns, Dec. 24, 1928.)		1pp	1978	.50
<b>UNITED STATES FORGERIES AND COUNTERFEITS</b>					
15448	Focus on Forgeries. United States 1930 \$2.60 Graf Zeppelin Stamp. Scott C15.	Tyler, V.E.	1pp ill	1997	.50
15447	Focus on Forgeries. United States 1938 3 Cent Jefferson Presidential Issue. Scott 807.	Tyler, V.E.	1pp ill	1996	.50
<b>UNITED STATES LOCALS AND PRIVATE POSTS</b>					
15508	United States Local Stamps. Boyd's City Express Post.	Needham, H.C.	7pp ill	1917	3.50
<b>UNITED STATES MARITIME MAIL</b>					
15509	Boat Lines of the Railway Mail Service.	Clover, R.S.	2pp ill	1940	1.00
<b>UNITED STATES PAPER - WATERMARKS</b>					
15482	'U.S.P.S.'. Notes on United States Watermarked Postage Stamps.	Boggs, W.S.	13pp ill	1958	5.75
<b>UNITED STATES PARCEL POST</b>					
15483	The First 'Postal People' Issue. Scott Q1-Q12.		1pp ill	1973	.50
<b>UNITED STATES PLATE BLOCKS AND NUMBERS</b>					
15451	A Census of U.S. Classic Plate Blocks 1985 Supplement.	Chapin, J.C.	2pp	1985	1.00
15484	USA Bicentennial Margin Marking.		1pp ill	1972	.50
15485	What the Collector of U.S. Plate Numbers Ought to Know.		5pp ill	1972	2.50

**UNITED STATES POST OFFICE OPERATIONS**

15450 The Workhorse of the Postal Service.	Gray, J.A.	2pp ill	1992	1.00
--	------------	---------	------	------

**UNITED STATES POSTAL HISTORY**

15452 Lawrence of Arizona...When Ships of the Desert Carried the Mail.		2pp ill	1982	1.00
--	--	---------	------	------

15453 New Era For Philately Launched by 1923 Stamp Illustration Law.	Bruns, F.R.	3pp ill	1973	1.50
--	-------------	---------	------	------

**UNITED STATES POSTAL STATIONERY**

15455 First Day Cancel on First U.S. Postal Card.		1pp ill	1973	.50
---	--	---------	------	-----

15454 First U.S. Postal Card 100 Years Old May 13.		3pp ill	1973	1.50
--	--	---------	------	------

**UNITED STATES PRECANCELS**

15457 About United States Precancels.	Mayuvin, W.	1pp ill	1973	.50
---------------------------------------	-------------	---------	------	-----

15491 Precancel Highlights. Illinois Precancels.	Metz, C.	2pp	1950	.50
--	----------	-----	------	-----

15490 Precancels. Bureau Print Collecting...A Popular US Specialty.	Brooks, E.L.	1pp ill	1950	.50
---	--------------	---------	------	-----

15456 Summary of Standard Coil Styles.	Gunesch, A.	1pp	1966	.50
--	-------------	-----	------	-----

**UNITED STATES PRODUCTION - ENGRAVING**

15480 Excerpts From Address of Director of Bureau of Engraving & Printing, . Oct 27, 1913		1pp	1938	.50
--	--	-----	------	-----

**UNITED STATES PRODUCTION - PERFORATION**

15469 Size Can Determine Perforation of a U.S. Commemorative.		1pp ill	1973	.50
---	--	---------	------	-----

**UNITED STATES RAILWAY MAIL**

15459 'V.A.C.R.R. COBHAM': Postal Service on the Virginia Central Railroad During the Civil War Period.	Newman, L.	13pp ill	1985	5.75
--	------------	----------	------	------

**UNITED STATES REVENUES**

15499 A Most Remarkable Beer Stamp.	Priester, T.	1pp ill	1983	.50
-------------------------------------	--------------	---------	------	-----

15498 Current Distilled Spirits Stamp.	Leshner, R.E.	1pp ill	1978	.50
--	---------------	---------	------	-----

15462 Early Revenue Stamp Counterfeits.	Sheaff, D.	1pp	1982	.50
---	------------	-----	------	-----

15494 Future Delivery Tax Stamps.		1pp ill	1983	.50
-----------------------------------	--	---------	------	-----

15464 Michigan Bear Hunting Stamps.	Linder, C.H.	1pp ill	1979	.50
-------------------------------------	--------------	---------	------	-----

15501 Pennsylvania Bedding & Upholstery. Recant History.	Leshner, R.E.	1pp ill	1979	.50
--	---------------	---------	------	-----

15497 Plate Varieties. Pre-print Paper Folds.	Giacomelli, A.	2pp ill	1980	1.00
---	----------------	---------	------	------

15495 Precancellations on RF24 & RF25.	Beaumont, H.B.	1pp	1978	.50
--	----------------	-----	------	-----

15466 Private Die Proprietary Stamp Notes: "Henry Dalley".	Holcombe, H.W.	7pp ill	1940	3.50
--	----------------	---------	------	------

15461 R250a Multiple Discovered.	Friedberg, R.	1pp ill	1985	.50
----------------------------------	---------------	---------	------	-----

15467 Sensitive Ink Varieties on U.S. Revenues. (1940 Documentary Issue)		1pp	1950	.50
--	--	-----	------	-----

15502 Stateside 12. (State Revenue Stamps)	Leshner, R.E.	1pp ill	1983	.50
--	---------------	---------	------	-----

15463 The Cancellations of the United States Playing Card Company.	Waggoner, W.H.	3pp ill	1982	1.50
--	----------------	---------	------	------

15465 The Intangibles of Indiana.	Soderling, A.J.	1pp ill	1978	.50
-----------------------------------	-----------------	---------	------	-----

15500 The Lawrence & Martin Private Die Stamp.	Rushefsky, N.	3pp ill	1980	1.50
--	---------------	---------	------	------

15503 The Nebraska Real Estate Transfer Stamp.	Pruess, K.P.	1pp ill	1978	.50
--	--------------	---------	------	-----

15496 The Story of a Revenue Stamp. Scott R158B.	Borthwick, E.R.	1pp ill	1978	.50
--	-----------------	---------	------	-----

15460 U.S. Federal Boating Stamp.		1pp	1979	.50
-----------------------------------	--	-----	------	-----

15468 United States Revenue Stamps.	West, C.	3pp ill	1973	1.50
-------------------------------------	----------	---------	------	------

**UNITED STATES SEALS AND LABELS**

15504 U.S. Post Office Seals.	Robertson, P.A.	3pp ill	1990	1.50
-------------------------------	-----------------	---------	------	------

**UNITED STATES SPECIALIZED – 1908-1909**

15505 Bluish & "Clay" Paper Specimens 1908-09 Regular Issue on Cover.	White, R.H.	4pp ill	1990	2.00
---	-------------	---------	------	------

**UNITED STATES SPECIALIZED – 1917-1923**

15506 Guide Lines on Dollar Values.	Cabeen, R.M.	1pp	1936	.50
-------------------------------------	--------------	-----	------	-----

**UNITED STATES SPECIALIZED - 1932**

15443 The Washington Bicentennial Commemoratives. Scott 704-715.		2pp ill	1974	1.00
--	--	---------	------	------

**UNITED STATES TELEGRAPH ISSUES**

15470 His Signature Not His Face Graced Stamps. (Albert B. Chandler. Postal Telegraph Cable Co.)	LeMarre, T.	1pp ill	1996	.50
---	-------------	---------	------	-----

**UNITED STATES USED ABROAD**

15471 Rare U.S.-Japan Cover Discovered. (U.S. Consular Post Office at Hakodate, Japan, December 22, 1874)		1pp ill	1972	.50
--	--	---------	------	-----

**TOPICAL COLLECTING – FAMOUS PEOPLE**

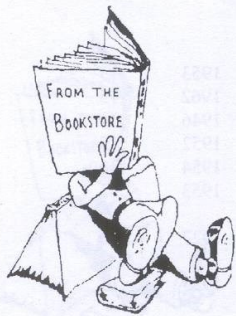
15458 Presidents on U.S. Stamps.		3pp ill	1973	1.50
----------------------------------	--	---------	------	------

15479 Story of Francis Scott Key & Our National Anthem.	Scott, W.P.	1pp ill	1950	.50
---	-------------	---------	------	-----

15493 Thomas Jefferson, Statesman, Patriot & Lover of Music.	Scott, W.P.	1pp ill	1950	.50
--	-------------	---------	------	-----

15492 William Henry Harrison, Statesman & Military Leader.	Mulford, M.	1pp ill	1950	.50
--	-------------	---------	------	-----





# Tear Sheet List

FWPL BOOKSTORE  
P.O. Box 2219  
Sunnyvale, CA 94087

One of the policies of the FWPL is to inform members about the availability of duplicate material. Any item listed here may be purchased by sending your payment to the address above. The funds received from sales help with operational expenses and go towards acquisitions we otherwise could not obtain. Please remember to add the postage costs: 49-cents for each 4 pages ordered.

A growing list of tear sheets is available through our website at [www.fwpl.org/tearsheets.htm](http://www.fwpl.org/tearsheets.htm), which also links to tear sheets on Leonard Hartmann's Internet website: [www.pbbooks.com](http://www.pbbooks.com)

## GENERAL WORLDWIDE SUBJECTS

### **ANTARCTICA**

- |   |                      |     |     |      |      |
|---|----------------------|-----|-----|------|------|
| 13324 Collecting Covers of South Polar Expeditions. | Hopps, E.C.          | 2pp | ill | 1956 | 1.00 |
| 13297 U.S.. Coast Guard Mail Service in Antarctica. | PID U.S. Coast Guard | 4pp | ill | 1961 | 2.00 |

### **ARCTIC**

- |  |                |     |     |      |      |
|--|----------------|-----|-----|------|------|
| 13312 Conquest of the North Pole.        | Thompson, C.F. | 1pp | ill | 1956 | .50  |
| 13333 Peary at the Pole Fifty Years Ago. | Miller, H.     | 2pp |     | 1959 | 1.00 |

### **CINDERELLA MATERIAL**

- |  |              |     |     |      |     |
|--|--------------|-----|-----|------|-----|
| 13367 "Little Wanderers Aid Society". (Samuel Allan Taylor creation) | Sloane, G.B. | 1pp | ill | 1957 | .50 |
|--|--------------|-----|-----|------|-----|

### **COLLECTING**

- |   |                 |     |     |      |      |
|---|-----------------|-----|-----|------|------|
| 13362 Collecting Made Easy. St. Andrew's Cross.                     |                 | 1pp | ill | 1986 | .50  |
| 13339 Condition is Important.                                       | Sill, J.T.      | 2pp |     | Unk. | 1.00 |
| 13338 Consider Five Methods to Dispose of Holdings.                 | Pietzsch, S.    | 1pp |     | Unk. | .50  |
| 13300 Decoupage or...How to Put Your Duplicates to Work.            | Allen, C.N.     | 4pp | ill | 1978 | 2.00 |
| 13327 Essentials of Good Research. Adapted From J.V. Brietwieser.   | Rich, S.G.      | 1pp |     | 1958 | .50  |
| 13351 Getting Young People Interested in Stamp Collecting.          | Hotchner, J.M.  | 9pp |     | 1958 | 4.50 |
| 13371 Report of the APS Committee on Stamp Condition, May 23, 1932. |                 | 7pp |     | 1932 | 3.50 |
| 13328 Some Reasonable Thoughts on Condition.                        | Herst, H.       | 1pp |     | 1959 | .50  |
| 13352 Sustaining Stamps in Their Beauty.                            | Rich, S.G.      | 2pp | ill | 1957 | 1.00 |
| 13336 The Post Horn.  | Rinker, K.      | 1pp | ill | 1935 | .50  |
| 13329 The Proper Way to Annotate Stamps.                            | Kehr, E.A.      | 2pp |     | Unk. | 1.00 |
| 13364 What Grandpa Bought in 1881.                                  | Purcell, G.W.   | 3pp |     | 1931 | 1.50 |
| 13315 Why Not Collect Number Ones?                                  | Barnhardt, H.M. | 2pp | ill | 1958 | 1.00 |
| 13337 Youth Philately: Ideas, Issues & Insights.                    | Bowman, M.A.    | 6pp | ill | 1988 | 3.00 |

### **COVERS**

- |  |               |     |     |      |      |
|--|---------------|-----|-----|------|------|
| 13334 Entires Are Gems. Discourage Counterfeits. | Greig, J.A.   | 2pp | ill | 1954 | 1.00 |
| 13313 Some Odds & Ends About Stampless Covers.   | Connett, E.V. | 6pp | ill | 1957 | 3.00 |

### **EXPERTIZING**

- |                                       |            |     |  |      |      |
|---------------------------------------|------------|-----|--|------|------|
| 13368 Logical Philatelic Expertizing. | Cohn, E.M. | 3pp |  | 1993 | 1.50 |
|---------------------------------------|------------|-----|--|------|------|

### **FORGERIES AND COUNTERFEITS**

- |  |                |      |     |      |       |
|--|----------------|------|-----|------|-------|
| 13360 A European Three-Step or Misstep? British Stamp & Tie Tell the Tale. | Hahn, C.M.     | 2pp  | ill | 1987 | 1.00  |
| 13359 Book Review. Philatelic Forgers: Their Lives & Works, by V.E. Tyler. | Hahn, C.M.     | 3pp  |     | 1991 | 1.50  |
| 13326 "Caveat Emptor". The Life & Times of S. Allan Taylor.                | Kindler, J.    | 30pp | ill | 1966 | 10.00 |
| 13325 On the Detection of Forgeries.                                       | Earee, R.B.    | 4pp  |     | 1935 | 2.00  |
| 13323 The Rarest Philatelic Forgery of the Second World War?               | Friedman, H.A. | 4pp  | ill | 1978 | 2.00  |
| 13369 Why & How to Know Forgeries.   | Engel, A.      | 4pp  | ill | 1993 | 2.00  |

### **LITERATURE**

- |  |                |      |  |      |       |
|--|----------------|------|--|------|-------|
| 13314 All in a Decade. An Interview With Harry Hayes.    | Stringer, K.E. | 5pp  |  | 1971 | 2.50  |
| 13335 Baron von Ferrary as an Author.                    |                | 1pp  |  | 1947 | .50   |
| 13298 Create a Philatelic Library With Maps, Books More. | Cohn, E.M.     | 2pp  |  | 1992 | 1.00  |
| 13370 Konwiser: A Legacy to Historians, Collectors.      | Sente, M.J.    | 2pp  |  | 1984 | 1.00  |
| 13361 Periodicals—Neglected Philatelic Tools.            | Hahn, C.M.     | 2pp  |  | 1979 | 1.00  |
| 13299 The Philatelic Literature Review; 1942-1970.       | Peterson, C.J. | 40pp |  | 1971 | 12.50 |

### **MILITARY AND WAR ISSUES**

- |  |             |     |     |      |      |
|--|-------------|-----|-----|------|------|
| 13358 Aerial Propaganda Leaflets, 1939-45. | Robbs, P.H. | 3pp | ill | 1946 | 1.50 |
|--|-------------|-----|-----|------|------|

### **POSTAL HISTORY**

- |  |                |      |     |      |      |
|--|----------------|------|-----|------|------|
| 13302 How the Market Absorbs Millions of Stamps.                 | Phillips, C.J. | 13pp |     | 1940 | 5.75 |
| 13372 Organization & Illustrations in Postal History Monographs. | Stone, R.G.    | 2pp  |     | 1990 | 1.00 |
| 13301 What is the Earliest Handstamped Postal Marking?           | Chase, C.      | 2pp  | ill | 1944 | 1.00 |

### **PRECANCELS**

- |                                 |  |     |  |      |       |
|---------------------------------|--|-----|--|------|-------|
| 13363 These Are Not Precancels. |  | 2pp |  | 1931 | 1.00. |
|---------------------------------|--|-----|--|------|-------|

**PRODUCTION**

- |       |                                 |              |          |      |      |
|-------|---------------------------------|--------------|----------|------|------|
| 13340 | How Postage Stamps Are Printed. | Baxter, J.H. | 13pp ill | 1936 | 5.75 |
| 13316 | Stamps Made by Etching.         | Rich, S.G.   | 2pp      | 1952 | 1.00 |

**PRODUCTION - GUM**

- |       |   |             |         |      |      |
|-------|---|-------------|---------|------|------|
| 13330 | Many Consider Re-gumming an Undesirable Alteration. | Berger, S.  | 2pp ill | 1973 | 1.00 |
| 13303 | The Fetish of Gum.                                  | Hurst, P.J. | 1pp ill | 1966 | .50  |

**PRODUCTION - PAPER**

- |       |                    |          |     |      |      |
|-------|--------------------|----------|-----|------|------|
| 13353 | Philatelic Papers. | Hahn, M. | 3pp | 1934 | 1.50 |
|-------|--------------------|----------|-----|------|------|

**TOPICAL COLLECTING**

- |       |                           |              |         |      |      |
|-------|---------------------------|--------------|---------|------|------|
| 13342 | According to Its Picture. | Rich, S.G.   | 2pp ill | 1953 | 1.00 |
| 13309 | Topical Philately.        | Gordon, L.F. | 3pp ill | 1957 | 1.50 |

**TOPICAL COLLECTING - ANIMALS**

- |       |   |             |         |      |     |
|-------|---|-------------|---------|------|-----|
| 13357 | Philatelic Zoology. The Vicuna & Other American Camels. | Moore, W.G. | 1pp ill | 1950 | .50 |
|-------|---|-------------|---------|------|-----|

**TOPICAL COLLECTING - ART**

- |       |               |               |         |      |     |
|-------|---------------|---------------|---------|------|-----|
| 13304 | Did You Know? | McAlister, C. | 1pp ill | 1957 | .50 |
|-------|---------------|---------------|---------|------|-----|

**TOPICAL COLLECTING - CHRISTMAS**

- |       |   |                |         |      |      |
|-------|---|----------------|---------|------|------|
| 13317 | Christmas Breads & Their Origin.          | Broneder, H.   | 1pp     | 1974 | .50  |
| 13305 | The Unrecognized Architects of Christmas. | Hotchner, J.M. | 2pp ill | 1995 | 1.00 |
| 13355 | Truly a Christmas Collection.             | Bourgraf, G.   | 2pp ill | 1956 | 1.00 |

**TOPICAL COLLECTING - FAMOUS PEOPLE**

- |       |                                   |                 |         |      |      |
|-------|-----------------------------------|-----------------|---------|------|------|
| 13310 | Captain James Cook.               | Fennel, A.D.    | 2pp     | 1928 | 1.00 |
| 13343 | Columbus...More Than an Explorer. | Robertson, C.A. | 2pp ill | 1957 | 1.00 |

**TOPICAL COLLECTING - FISH**

- |       |                 |                                 |         |      |      |
|-------|-----------------|---------------------------------|---------|------|------|
| 13331 | Fish on Stamps. | Eschmeyer, W.N. & Bearnse, G.A. | 8pp ill | 1974 | 4.00 |
|-------|-----------------|---------------------------------|---------|------|------|

**TOPICAL COLLECTING - FLORA AND FAUNA**

- |       |                |                |         |      |      |
|-------|----------------|----------------|---------|------|------|
| 13346 | Flora & Fauna. | Andersen, H.C. | 2pp ill | 1957 | 1.00 |
|-------|----------------|----------------|---------|------|------|

**TOPICAL COLLECTING - LANGUAGES**

- |       |                                   |           |         |      |     |
|-------|-----------------------------------|-----------|---------|------|-----|
| 13341 | Zamenhof—Originator of Esperanto. | Simon, W. | 1pp ill | 1959 | .50 |
|-------|-----------------------------------|-----------|---------|------|-----|

**TOPICAL COLLECTING - MASONS**

- |       |                          |               |         |      |     |
|-------|--------------------------|---------------|---------|------|-----|
| 13344 | James Madison, A. Mason. | Needham, R.M. | 1pp ill | 1956 | .50 |
| 13356 | Masonic Female College.  | Kohn, D.      | 1pp ill | 1959 | .50 |

**TOPICAL COLLECTING - MEDICINE**

- |       |                         |               |         |      |      |
|-------|-------------------------|---------------|---------|------|------|
| 13365 | From Magic to Medicine. | McAlister, C. | 5pp ill | 1951 | 2.50 |
|-------|-------------------------|---------------|---------|------|------|

**TOPICAL COLLECTING - MUSIC**

- |       |  |                 |         |      |      |
|-------|--|-----------------|---------|------|------|
| 13319 | Arnold Schonberg & Dodecaphony.            | Schollum, R.    | 1pp ill | 1974 | .50  |
| 13345 | Chopin---Poland's Greatest Musical Genius. | Gasior, T.      | 2pp ill | 1960 | 1.00 |
| 13318 | Ignacy Jan Paderewski.                     | Borkowski, J.A. | 2pp ill | 1960 | 1.00 |

**TOPICAL COLLECTING - RELIGION**

- |       |  |              |         |      |      |
|-------|--|--------------|---------|------|------|
| 13347 | Bits of Church History on World Postage. Father Marquette & The Mississippi.                     | Berger, E.   | 2pp ill | 1956 | 1.00 |
| 13296 | Bits of Church History on World Postage. Notre Dame de Paris.                                    | Berger, E.   | 1pp     | 1956 | .50  |
| 13320 | Bits of Church History on World Postage. South of the Rio Grande: Morelos, a Revolutionary Hero. | Berger, E.   | 1pp     | 1957 | .50  |
| 13348 | "Christ—Crucified".  | Bourgraf, G. | 2pp ill | 1958 | 1.00 |
| 13321 | Christ on Stamps.  | Rizzo, T.    | 1pp ill | 1956 | .50  |
| 13306 | Official Catholic Directory. Archbishops on Stamps.  | Cech, F.     | 3pp ill | 1956 | 1.50 |

**TOPICAL COLLECTING - ROYALTY**

- |       |                 |                 |         |      |      |
|-------|-----------------|-----------------|---------|------|------|
| 13349 | Royal Romances. | Christensen, A. | 2pp ill | 1956 | 1.00 |
|-------|-----------------|-----------------|---------|------|------|

**TOPICAL COLLECTING - SCIENCE**

- |       |                   |              |         |      |      |
|-------|-------------------|--------------|---------|------|------|
| 13311 | Science & Stamps. | Clarke, B.L. | 9pp ill | 1936 | 4.50 |
|-------|-------------------|--------------|---------|------|------|

**TOPICAL COLLECTING - SCOUTS**

- |       |                                  |               |         |      |     |
|-------|----------------------------------|---------------|---------|------|-----|
| 13332 | Lord Robert Baden Powell.        | Coliaezzi, M. | 1pp ill | 1958 | .50 |
| 13366 | My Favorite Topic. Scout Stamps. | Klieger, H.   | 1pp ill | 1967 | .50 |

**TOPICAL COLLECTING - SHIPS**

- |       |                           |           |         |      |      |
|-------|---------------------------|-----------|---------|------|------|
| 13307 | Down to the Sea in Ships. | Chemi, J. | 3pp ill | 1968 | 1.50 |
|-------|---------------------------|-----------|---------|------|------|

**TOPICAL COLLECTING - SPORTS AND RECREATION**

- |       |                       |             |         |      |     |
|-------|-----------------------|-------------|---------|------|-----|
| 13354 | Baseball on Stamps.   | Sweet, T.D. | 1pp ill | 1959 | .50 |
| 13350 | Basketball on Stamps. | Sweet, T.D. | 1pp     | 1958 | .50 |

**TOPICAL COLLECTING - STAMPS ON STAMPS**

- |       |                   |  |         |     |      |
|-------|-------------------|--|---------|-----|------|
| 13322 | Stamps on Stamps. |  | 8pp ill | Unk | 4.00 |
|-------|-------------------|--|---------|-----|------|

**TOPICAL COLLECTING - TYPEWRITERS**

- |       |                                 |               |         |      |      |
|-------|---------------------------------|---------------|---------|------|------|
| 13308 | The Typewriter Centenary Story. | Leonard, A.G. | 2pp ill | 1968 | 1.00 |
|-------|---------------------------------|---------------|---------|------|------|

# **FRIENDS OF THE WESTERN PHILATELIC LIBRARY** **MEMBERSHIP APPLICATION**

NAME_____	DATE_____
STREET_____	NEW MEMBER____ RENEWING____
CITY_____	PHONE (    )_____
STATE/COUNTRY_____ ZIP_____	PROPOSED BY_____
E-MAIL_____	

What are your collecting interests?

What literature would you like to see in the Philatelic Library? name specific titles and authors, if possible.

Would you be willing to make a donation of this publication to the library?

Do you have experience or knowledge in any of the following areas that could benefit the library?

Philatelic Literature	Publications	Typing
Postal History	Publicity Writing	Computer Maintenance
Library Work/Cataloging	Philatelic Writing	Database Programming
Public Speaking	Photography	Computer Interface Networking
Public Relations	Art/Graphics	Translation (specify Languages)

## **MEMBERSHIP DUES AND DONATIONS**

Please enroll me as a member of the Friends of the Western Philatelic Library, Inc.

Individual annual memberships, by calendar year, are: (all prices in USA \$)

Participating:    USA \$25.00    Canada \$28.00    Overseas (Air Mail) \$35.00

Contributing:    USA 35..00    Canada \$38.00    Overseas (Air Mail) \$45..00

Other categories: Life (no annual dues) \$250.00    Life Overseas \$350..00    Founder \$1000.00

Enclosed:                    Membership\_\_\_\_\_                    Donations \_\_\_\_\_                    **Total** \_\_\_\_\_

Donations in any amount are appreciated. Donations to the Book Purchase Fund or Library Operation Fund may be specified. Please Note: All donations to the Friends of the Western Philatelic Library, above the membership amount, may be tax deductible!

The Friends of the Western Philatelic Library, is an organization of philatelists assisting in the growth and maintenance of the Western Philatelic Library, located 40 miles south of San Francisco. The library is one of the largest public philatelic libraries in the United States today, containing over 3000 lineal feet of shelving for books, catalogs and bound periodicals, plus 48 drawers of unbound periodicals and 30 drawers of pamphlets with a 15 drawer index. We hope that you will want to join in the building of the future of the Western Philatelic Library. This can be done in many ways, as indicated by your offer to help with your time and talents or through donations of material. We need all types of philatelic publications, including books, catalogs and any other reference material. Any kind of literature which would be of use to beginner or advanced collector is desired. All donations will be acknowledged, and appropriate items will carry any attractive bookplate honoring its donor. Donations of material maybe directed to the Friends' Sunnyvale Post Office Box at low library postal rates.

## **Benefits of Membership include:**

1. *The Bay Phil*, bi-monthly newsletter of Reviews, Tear Sheets, Book Lists and publishing announcements.
2. Complimentary listing of new and duplicate books available in the Philatelic Library.
3. Complimentary price lists of philatelic literature and tear sheets available from stock.
4. Complimentary catalogs of auctions of literature and stamps to be held by the "Friends".
5. A discount of 10% on purchases of duplicate literature.
6. Submission of your suggested list of specific titles of philatelic literature, or your donation of publications so that others may also increase their philatelic knowledge.
7. Members Buy/Sell ads in *The Bay Phil*.



BP 312



P.O. Box 2219 - Sunnyvale, CA 94087

ADDRESS SERVICE REQUESTED

