

# *The Bay Phil*

A publication of Friends of the Western Philatelic Library, Inc.,  
an organization of philatelists assisting in the growth and maintenance of the  
Western Philatelic Library, 3004 Spring Street, Redwood City, CA  
Mailing Address: FWPL, P.O. Box 2219, Sunnyvale, CA 94087-2219

November/December 2014

Volume 44 No. 6, Whole Number 305  
ISSN 8756-5153

## **VOLUNTEER WORK AT LIBRARY!**

Due to popular demand one Saturday each month will be set aside for volunteers to visit the library and put in a few hours helping to work through our many tasks and piles of literature. The third Saturday of each month will be Volunteer Day. Here are the dates for 2012.

December 20, 2014  
January 17, 2015  
February 21, 2015  
March 21, 2015  
April 18, 2015  
May 16, 2015  
June 20, 2015

## **MEMBERSHIP NEWS**

### **Deceased**

James Jefferson

### **Moved**

### **New**

William Miller (CA)  
John E. Barkpoll (CA)  
George Struble (CA)

## **Book Returns**

The WPL exists as a resource for everyone. The lending policy is very lenient for anyone borrowing books or other items. Most members appreciate this service and use it well, including returning the items in a timely manner. However, a few overextend their borrowing time and stretch it to the limit. It makes more work and problems to the few volunteers that we have who need to chase down delinquent borrowers and call them for returns that are sometimes **years** old. Please check any of your borrowed books and return them so others might benefit from them. The alternative is one we don't like: the limiting of borrowers who are chronic extenders, by denying their borrowing privilege.

## **In This Issue**

<b>Members - Deceased, Moved or New</b>	<b>1</b>
<b>Editor's Corner</b>	<b>2</b>
<b>Thank You For Your Donations</b>	<b>3</b>
<b>WESTPEX Donates \$25,000 to WPL</b>	<b>3</b>
<b>Building Funds Needed</b>	<b>3</b>
<b>Thomas Lera Receives Special Award</b>	<b>4</b>
<b>Tear Sheets</b>	<b>5-8</b>
<b>Book Review</b>	<b>9</b>
<b>Membership Application</b>	<b>11</b>



Friends of the Western Philatelic Library, Inc.  
APS Chapter 836

Preserving Philatelic History for the Future



CHAIR	Stuart Levin stulev@ix.netcom.com
V.C. - ACQUISITIONS	Roger Skinner rogerskinner96@yahoo.com
V.C. - MEMBERSHIP	Dick Clever richard@asiaphilatelics.com
SECRETARY	
TREASURER	Jo Skinner skinnerjo80@yahoo.com
DIRECTOR	
DIRECTOR	
DIRECTOR	
DIRECTOR	
DIRECTOR	
---Staff---	
WEB MASTER	
BINDERY	Lois Bertleson
BAY PHIL EDITOR	Richard M. Hanchett editorofbayphil@cox.net
Postal Address	6 Rainbow Court Warwick, RI 02889-1118
Library Hours:	Tuesday Noon to 5 PM Wednesday 1PM to 4PM and 5PM to 7PM Friday 10AM to 5PM Saturday Noon to 5PM
Web Site	<a href="http://www.fwpl.org">www.fwpl.org</a>
Tear Sheet listing at Leonard Hartmann's Internet Web Site	<a href="http://www.pbbooks.com">www.pbbooks.com</a>

## Editor's Corner

As you will notice, this issue is 4 pages shorter than usual, 12 instead of 16. The high cost of mailing has finally caught up with *The Bay Phil* and something needed to be done. The decision was made to reduce the number of pages per issue from 16 to 12. So, from this point on, the normal issue will contain 12 pages. Sorry that this has to be, but WPL must either save money or it will eventually have to cease publication altogether, and none of us wants that to happen.

Richard M. Hanchett, Editor  
[editorofbayphil@cox.net](mailto:editorofbayphil@cox.net)

## BOARD MEETINGS

Regular Board Meetings are open to all FWPL members. Meetings begin at 4PM the fourth Wednesday of each month at the WPL at 3004 Spring Street. Feel free to drop in and see what is going on. You might call President Stuart Leven, (408) 978-0193 beforehand to confirm details of location, time and date.

## Mission Statement

The Western Philatelic Library exists to enhance the preservation and dissemination of philatelic knowledge by acquiring, organizing, interpreting and distributing information resources in a globally networked community.

## WPL Vision Statement

We will be known as setting the standard for providing a responsive, convenient gateway to philatelic knowledge.

Our Commitments:

- To build and conserve a world-class collection of printed, electronic and other media;
- To support, extend and enrich the pursuit of knowledge and enjoyment through stamp collecting;
- To provide access and support for beginners, hobbyists, specialists, writers and postal historians;
- To promote knowledge through public educational events and displays; and
- To collaborate and cooperate with other libraries.

## THE BAY PHIL

*The Bay Phil* is the bi-monthly newsletter of the Friends of the Western Philatelic Library (FWPL), a non-profit organization. The contents of *The Bay Phil* are copyrighted © 2012 by FWPL. It has always been our policy that material can be used in whole or in part by individuals or other non-profit organizations, provided credit is given to *The bay Phil* and the individual authors of the reproduced material. A copy of the publication in which the material is printed is requested to be provided for our archives.

## THANK YOU FOR YOUR DONATIONS

Jerry Moore (CA) various stamp catalogues

### WESTPEX Donates \$25,000 to The Western Philatelic Library

Once again, WESTPEX, Inc. steps up in its support of philately. At a recent meeting of the Board of Directors, a unanimous vote offered the Western Philatelic Library a grant of \$25,000, payable in five yearly payments of \$5,000. With the library's move to a new facility, this grant will help in the move from the old facility, assist in the set up and in the future maintenance.

The new facility is located at 3004 Spring Street, on the corner of 2<sup>nd</sup> Avenue, Redwood City, CA, just 20 miles south of San Francisco and 25 miles north of San Jose. The 50000 square foot facility, in a concrete walled building, houses the 8000 books, 8000 pamphlets, 8000 stamp catalogues and 8000 bound journals, all relating to philately. It is certainly one of the largest philatelic libraries in the United States. The facility was purchased by Friends of the Western Philatelic Library and its volunteers are busy setting up shelving and sorting books and journals. Visitors are welcome, but please call ahead to make sure there is someone there for you. The visitor entrance is at the corner of 2<sup>nd</sup> Avenue. The mailing address for information about membership, donations, book loans and sales is P. O. Box 2219, Sunnyvale CA 94087.

WESTPEX, Inc. has a long history of supporting the library with numerous donations for its journal binding efforts. In appreciation of this new donation, the Western Philatelic Library will house the archives of the WESTPEX Stamp Show and its sponsor, WESTPEX, Inc.

### Building Funds Needed

The Western Philatelic Library has been fortunate these many past years to have been housed in Sunnyvale's Raynor Activity Center, at no cost. Unfortunately the City of Sunnyvale sold the building and the library had to find a new home. A building in Redwood City was purchased to house the library's vast collection of books, catalogs, pamphlets, periodicals and other philatelic related materials.

You, our members, have been most generous in the past in providing funds for binding of books and periodicals and donating both books and funds to augment the vast collection of philatelic materials. Much of the work in getting the building usable to house the collection has been done by a few dedicated volunteers who have spent many hours and their own funds for needed supplies.

We are now asking if you would consider giving to the **Building Fund** to help pay for our building that houses philatelic literature for both specialists and beginning collectors. Any and all donations are greatly appreciated. We are a 501 (c) (3) organization and all donations are IRS tax deductible. We hope you will some day be able to visit our library and see for yourself the opportunity to enrich your philatelic knowledge

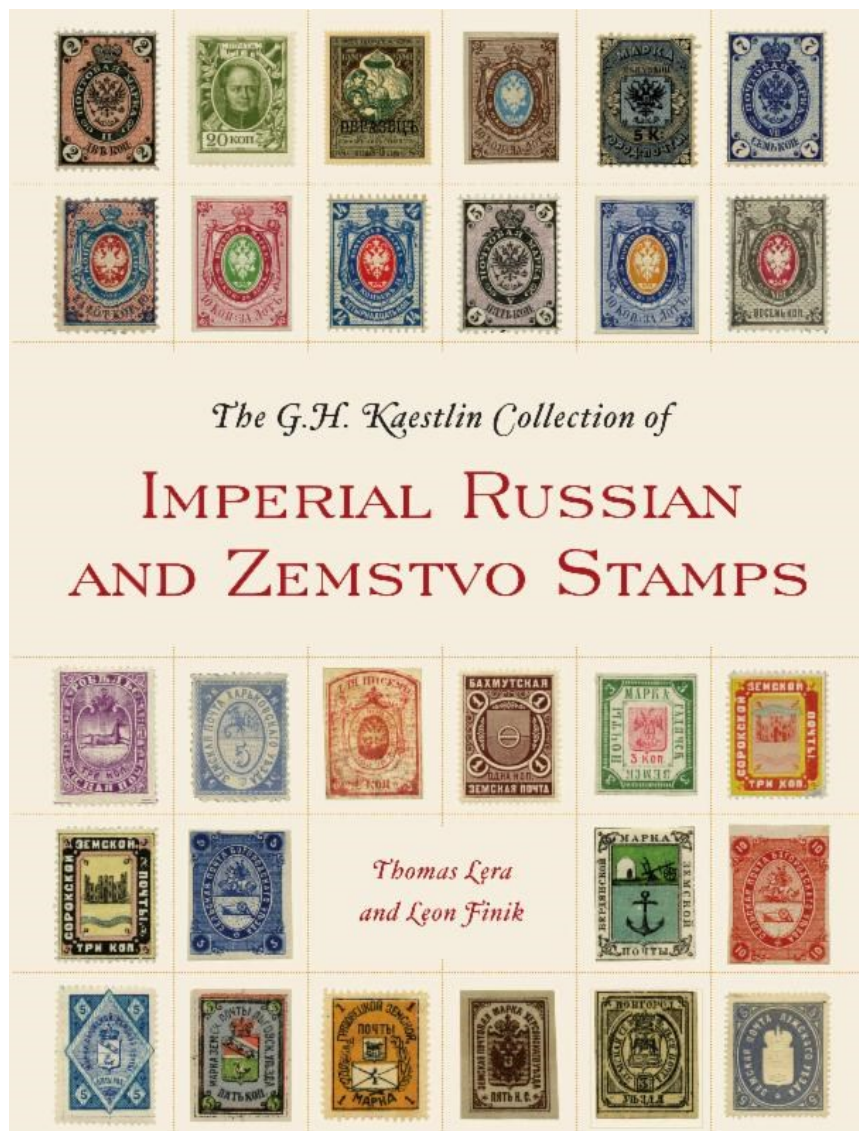
## Thomas Lera Receives Special Awards

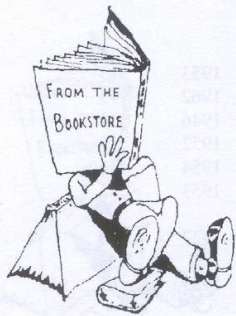
Thomas Lera, Winton Blount research chair at the National Postal Museum was recently recognized for two awards - Secretary's Research Prize and Gold Medal at APS StampShow.

Each year, the Secretary of the Smithsonian Institution works with the Smithsonian Congress of Scholars to present annual research prizes that recognize and promote excellence in scholarship across the Smithsonian Institution. The array of awards is designed to be pan-institutional, reflecting the diversity of research at the Smithsonian across disciplines.

Secretary G. Wayne Clough has selected Tom Lera to receive one of these awards, known as the Secretary's Research Prizes, for his book, "G. H. Kaestlin Collection of Imperial Russian and Zemstvo Stamps".

Information on ordering the book can be obtained at [scholarlypress@si.edu](mailto:scholarlypress@si.edu)





# Tear Sheet List

FWPL BOOKSTORE  
P.O. Box 2219  
Sunnyvale, CA 94087

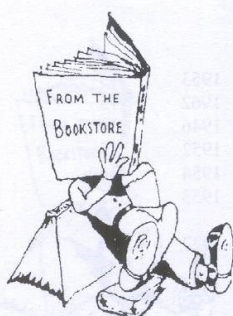
One of the policies of the FWPL is to inform members about the availability of duplicate material. Any item listed here may be purchased by sending your payment to the address above. The funds received from sales help with operational expenses and go towards acquisitions we otherwise could not obtain. Please remember to add the postage costs: 46-cents for each 4 pages ordered.

A growing list of tear sheets is available through our website at [www.fwpl.org/tearsheets.htm](http://www.fwpl.org/tearsheets.htm), which also links to tear sheets on Leonard Hartmann's Internet website: [www.pbbooks.com](http://www.pbbooks.com)

<b>UNITED STATES - CALIFORNIA</b>					
15304	"Por Fabor de Don Francisco O'Campo."	Greenberg, K.S.	2pp	ill	1983 1.00
<b>UNITED STATES - WISCONSIN</b>					
15284	Wisconsin Tercentenary Commemorative Stamp. (Postal Service announcement)	Eilenberger, C.B.	1pp		1934 .50
15285	Wisconsin—Three Centuries Ago.	Ruddell, P.	1pp		1934 .50
<b>UNITED STATES CIVIL WAR</b>					
15272	A Letter to Alice. Hearn, H.O.		1pp		1951 .50
<b>UNITED STATES CIVIL WAR - CONFEDERACY</b>					
15275	Book Review: Confederate States of America Markings & Postal History of Richmond, Virginia.	Green, B.M.	3pp		1988 1.50
15273	Confederate Postmasters of Mississippi.	Crigler, T.W.	1pp		1951 .50
15274	The Confederate Marine Corps.	Dukeshire, T.S.	2pp	ill	1956 1.00
15312	The Press for the Confederate Great Seal.	MacBride, V.D.	2pp	ill	1960 1.00
<b>UNITED STATES CHRISTMAS SEALS</b>					
15267	Emily Bissell & the Christmas Seal Story.	Babbitt, J.S.	3pp	ill	1994 1.50
<b>UNITED STATES COILS</b>					
15313	U.S. 1914-1916 Rotary Coils.	York, N.D.	1pp		1969 .50
<b>UNITED STATES COVERS</b>					
15315	Elusive Quarry: Classic U.S. Covers Dispatched to Africa	Rose, J.	2pp		1987 1.00
15314	Olive Tar. Great Antalgica Covers Invigorate Collecting.	Graham, R.B.	2pp	ill	2001 1.00
<b>UNITED STATES ERRORS AND VARIETIES</b>					
15296	A Splendid Eighty-year-old Christmas Card. (5 cent red error) Scott 505.	Lawrence, K.	3pp	ill	1997 1.50
<b>UNITED STATES EXHIBITIONS</b>					
15298	The International Electrical Exhibition. (Philadelphia, Sept 2, Oct 11, 1884)	Fricke, C.A.	2pp	ill	1997 1.00
<b>UNITED STATES EXPRESS COMPANIES</b>					
15276	Feather River Express.	Smith, C.E.	2pp	ill	1957 1.00
<b>UNITED STATES FIRST DAYS</b>					
15279	A Bibliography of Literature on U.S. First Day Covers: 1980-85.	Zubatsky, D.S.	9pp	ill	1988 4.50
15297	First Day Covers—How Many Ways?	Lawrence, K.	6pp	ill	1997 3.00
15261	The Road to the 1965 Dante F.D.C.	Koenig, D.	2pp	ill	1988 1.00
<b>UNITED STATES FORGERIES AND COUNTERFEITS</b>					
15277	APS Warning – Laser-Generated Overprints.		1pp	ill	1994 .50
15278F	& F's on Exhibit. Hotchner, J.		4pp	ill	1993 2.00
<b>UNITED STATES MARITIME MAIL</b>					
15280	Early American Packet Handstamped Markings.	Milgram, J.W.	5pp	ill	1990 2.50
15301	National Symbol Will Sail Again. (USS Constitution)	Jones, A.D.	2pp	ill	1997 1.00
<b>UNITED STATES METERED MAIL</b>					
15281	The Postage Due Meter Tests of 1941-1953. 2.00	Swan, W.M.	4pp	ill	1955
<b>UNITED STATES MILITARY MAIL</b>					
15262	U.S. Navy Ship Postmarks.	Lindhardt, H.J.	2pp	ill	1938 1.00
<b>UNITED STATES PARCEL POST</b>					
15303	A Large 'Cover'. Scott Q12.	Wren, G.	1pp	ill	1997 .50
<b>UNITED STATES POSTAGE DUES</b>					
15283	Our Due Stamps.	Rich, S.G.	2pp	ill	1950 1.00
<b>UNITED STATES POSTAL HISTORY</b>					
15263	Labels of the National Letter-Return Association.	Luff, J.N.	4pp	ill	1977 2.00



<b>UNITED STATES POSTAL MARKINGS</b>							
15271	Check List of "Station" Flags.	Townsend, A.C.	3pp	ill	1938	1.50	
15286	Held For Postage. Norona, D.		1pp	ill	1934	.50	
15270	Time-Saving Duplex Handstamps: Its Invention, Use & Manufacture.	Bond, A.H.	5pp	ill	1963	2.50	
15311	U.S. Cancellations Shield Cancellations.	Evans, W.	6pp	ill	1933	3.00	
<b>UNITED STATES POSTAL RATES</b>							
15305	Story Tellers. Postal History Includes the Study of Rates.	Rod, S.J.	2pp	ill	1987	1.00	
<b>UNITED STATES POSTAL STATIONERY</b>							
15287	U.S. Government Wrappers Began in 1861.	Graham, R.B.	3pp	ill	2000	1.50	
<b>UNITED STATES PRECANCELS</b>							
15254	A Precancel & Not a Precancel.	Ackerman, H.S.	1pp		1931	.50	
15264	What is a Precancel? Beck, R.J.		2pp		1934	1.00	
<b>UNITED STATES RAILWAY MAIL</b>							
15306	Railway Post Office Caught in 'Passing Parade' as Uncle Sam Puts More Zip to Speed.	Chemi, J.M.	2pp	ill	1968	1.00	
15265	Route Agent Cancellations.	Clover, R.S.	2pp	ill	1940	1.00	
<b>UNITED STATES REVENUES</b>							
15256	Silver Tax Revenues—Fakes.	Sloane, G.B.	1pp		1958	.50	
15289	Special Tax Stamps of the United States. An Update.	Hines, T.	2pp		1979	1.00	
15266	The Three Plates of the 5 Cent-Inland Exchange.	Bedford, C.W.	2pp	ill	1932	1.00	
15290	Virginia County, Virginia Soft Drink Throw-away Container Deposit Labels.	Alfano, L.	1pp	ill	1978	.50	
<b>UNITED STATES SOUVENIR PAGES</b>							
15282	Many Collectors Unaware That USPS Souvenir Page Program Exists.	Boughner, E.D.	2pp	ill	1985	1.00	
<b>UNITED STATES SPECIALIZED - 1847</b>							
15307	Lure of the 10 Cent Washington is Determined By Its Quality.	Rose, J.	2pp	ill	1987	1.00	
<b>UNITED STATES SPECIALIZED - 1869</b>							
15268	Three Cent 1869 Double Transfer.	Toasperm, H.	1pp	ill	1934	.50	
<b>UNITED STATES SPECIALIZED - 1893</b>							
15257	1893 Two Cent Columbian Variety.	Sloane, G.B.	1pp		1958	.50	
<b>UNITED STATES SPECIALIZED - 1917-1919</b>							
15258	1917-19 One Cent Perf 11.	Sloane, G.B.	1pp		1958	.50	
<b>UNITED STATES SPECIALIZED - 1923</b>							
15308	U.S. Varieties. 1923. 30 Cent Flat Plate.	Sloane, G.B.	1pp	ill	1933	.50	
<b>UNITED STATES SPECIALIZED - 1932</b>							
15291	The "Mysterious" Four Cent Washington. Bicentennial Portrait.	Nichols, M.C.	1pp	ill	1932	.50	
<b>UNITED STATES SPECIALIZED - 1934</b>							
15259	Third Asst. Postmaster General Announcement. Five Cent Postage Stamp-National Parks Series. (Yellowstone)	Eilenberger, C.B.	1pp		1934	.50	
<b>UNITED STATES SPECIALIZED - 1937</b>							
15292	Notes on U.S. Stamps. U.S. Army & Navy 4 Cent Stamps. Scott 788, 793.		1pp	ill	1937	.50	
<b>UNITED STATES SPECIALIZED - 1940</b>							
15309	Why They Were Chosen. (Famous Americans Series. Scott 859-893)	Kent, L.J.	4pp	ill	1956	2.00	
<b>UNITED STATES SPECIALIZED - 1942</b>							
15260	United States Postage & Migratory Bird Hunting Stamps of 1942.	Rossi, F.	3pp	ill	1943	1.50	
<b>UNITED STATES SPECIALIZED - 1954-1955</b>							
15310	People & Places. A "Re-cap" of the 1954-1955 U.S. Definitives.	Norris, S.H.	2pp	ill	1955	1.00	
<b>UNITED STATES SPECIALIZED - 1967</b>							
15294	Eugene O'Neill. Scott 1294, 1305c.	Hessen, B.	3pp	ill	1967	1.50	
15269	Francis Parkman. Trail-Blazing Historian.	Mueller, B.R.	3pp	ill	1968	1.50	
15293	Henry David Thoreau. The Gentle Rebel. Scott 1327	Gilman, H.	2pp	ill	1967	1.00	
<b>UNITED STATES SPECIALIZED - 1992</b>							
15295	Columbus' Landings.	Correl, F.	3pp	ill	1997	1.50	
<b>TOPICAL COLLECTING - FAMOUS PEOPLE - JEFFERSON</b>							
15288	Thomas Jefferson, Third President.	Konwiser, H.M.	1pp		Unk	.50	
<b>TOPICAL COLLECTING - FAMOUS PEOPLE - TAYLOR</b>							
15255	Gen. Zach Taylor vs. The U.S. Mails.	Claghorn, C.E.	1pp		1934	.50	
<b>TOPICAL COLLECTING - PARKS</b>							
15302	Creating a Philatelic Pathway Through Our National Parks.	Ohman, V.A.	5pp	ill	1997	2.50	



# Tear Sheet List

FWPL BOOKSTORE  
P.O. Box 2219  
Sunnyvale, CA 94087

One of the policies of the FWPL is to inform members about the availability of duplicate material. Any item listed here may be purchased by sending your payment to the address above. The funds received from sales help with operational expenses and go towards acquisitions we otherwise could not obtain. Please remember to add the postage costs: 46-cents for each 4 pages ordered.

A growing list of tear sheets is available through our website at [www.fwpl.org/tearsheets.htm](http://www.fwpl.org/tearsheets.htm), which also links to tear sheets on Leonard hartmann's Internet website: [www.pbbooks.com](http://www.pbbooks.com)

## **GENERAL WORLDWIDE SUBJECTS**

### **AIR MAIL**

- |       |                                                       |                |     |     |      |      |
|-------|-------------------------------------------------------|----------------|-----|-----|------|------|
| 13117 | First International Air Mail Exhibition. (Paris 1930) |                | 1pp | ill | 1930 | .50  |
| 13151 | The O.A.T. Postal Marking.                            | Goodkind, H.M. | 8pp | ill | 1959 | 4.00 |

### **ANTARCTICA**

- |       |                                           |               |     |     |     |      |
|-------|-------------------------------------------|---------------|-----|-----|-----|------|
| 13129 | Even Brabant Island Has Postal History.   | Pendleton, S. | 2pp | ill | Unk | 1.00 |
| 13130 | Polar Philately: Byrd Antarctic Ventures. | Graham, R.B.  | 2pp | ill | Unk | 1.00 |

### **ARCTIC**

- |       |                            |            |     |     |      |      |
|-------|----------------------------|------------|-----|-----|------|------|
| 13155 | Ziegler Polar Expeditions. | Hall, G.A. | 2pp | ill | 1952 | 1.00 |
|-------|----------------------------|------------|-----|-----|------|------|

### **AUCTIONS**

- |       |                                                                                                  |           |     |  |      |      |
|-------|--------------------------------------------------------------------------------------------------|-----------|-----|--|------|------|
| 13109 | The Effects of WWII on a Stamp Auction. (George R. M. Ewing Collection of U.S. June 18-21, 1940) | Herst, H. | 2pp |  | 1994 | 1.00 |
|-------|--------------------------------------------------------------------------------------------------|-----------|-----|--|------|------|

### **CACHETS**

- |       |                                      |  |     |     |      |      |
|-------|--------------------------------------|--|-----|-----|------|------|
| 13124 | Is This Art or Mail? Schlosser, W.E. |  | 2pp | ill | 1995 | 1.00 |
|-------|--------------------------------------|--|-----|-----|------|------|

### **CINDERELLA MATERIAL**

- |       |                                                      |           |     |     |      |      |
|-------|------------------------------------------------------|-----------|-----|-----|------|------|
| 13157 | A Serious Racket. (Bogus Stamps)                     |           | 2pp |     | 1954 | 1.00 |
| 13156 | The Wonderful Case of Alice. ("Alice in Wonderland") | Davis, G. | 5pp | ill | 1980 | 2.50 |

### **COLLECTING**

- |       |                                                                         |                   |     |     |      |      |
|-------|-------------------------------------------------------------------------|-------------------|-----|-----|------|------|
| 13102 | A Well Known Fact?                                                      | Foster, C.C.      | 3pp | ill | 1994 | 1.50 |
| 13139 | An Old Bill For Stamps. (1880)                                          | Sloan, G.B.       | 1pp |     | 1937 | .50  |
| 13122 | Future Shocks, Digital Technology Impacts Philately.                    | Criscuolo, J.E.   | 4pp | ill | 1995 | 2.00 |
| 13121 | Good Housekeeping Habits Important to Collecting.                       | Pietzch, S.       | 2pp |     | Unk  | 1.00 |
| 13132 | Philatelically Speaking—Happiness Is—(Pratt accepts Lichtenstein Award) |                   | 4pp | ill | 1984 | 2.00 |
| 13120 | Starting Point. New Beginnings.                                         | Klug, J.          | 2pp | ill | 1998 | 1.00 |
| 13145 | Timeless Advice For Collectors.                                         | Woods, P.J.       | 1pp | ill | 1992 | .50  |
| 13131 | Unlisted Varieties.                                                     | Bedford-Jones, H. | 3pp |     | 1934 | 1.50 |

### **COLLECTING – ARRANGEMENT AND MOUNTING**

- |       |                                                               |                |     |     |      |      |
|-------|---------------------------------------------------------------|----------------|-----|-----|------|------|
| 13104 | Hint: Find Out What the Judges Are Looking For Ahead of Time. | Neil, R.L.     | 2pp |     | 1984 | 1.00 |
| 13142 | In Exhibiting It Pays to 'Sweat the Small Stuff'.             | Neil, R.L.     | 2pp |     | 1990 | 1.00 |
| 13119 | Mounting Routing Labels On Cover.                             | Gitlow, S.     | 1pp | ill | 1978 | .50  |
| 13126 | Stamp Exhibitions & Competitions.                             | Collins, P.    | 3pp |     | 1986 | 1.50 |
| 13093 | Stamp Mounting.                                               | Copeland, L.H. | 5pp | ill | 1934 | 2.50 |

### **COLOR**

- |       |                                                                   |             |     |  |      |      |
|-------|-------------------------------------------------------------------|-------------|-----|--|------|------|
| 13135 | Atmospheric Gases & Stamp Colors.                                 |             | 1pp |  | 1938 | .50  |
| 13123 | Photographic Filters Prove Useful in Classifying Shade Varieties. | Davis, J.E. | 1pp |  | Unk  | .50. |

### **DESIGNS**

- |       |                                |                |     |  |      |      |
|-------|--------------------------------|----------------|-----|--|------|------|
| 13125 | Re-entries.                    | Goodfellow, B. | 2pp |  | 1930 | 1.00 |
| 13095 | The Primitive in Stamp Design. | Mueller, B.R.  | 2pp |  | Unk  | 1.00 |

### **DICTIONARIES AND ENCYCLOPEDIAS**

- |       |                                                                                                                                                                                         |            |     |  |      |      |
|-------|-----------------------------------------------------------------------------------------------------------------------------------------------------------------------------------------|------------|-----|--|------|------|
| 13148 | Philatelic Nomenclature. A Suggestion That "Double Strike" be The Philatelic Term to Describe the Surface Printed "Variety" Analogous to the to the "Re-entry" on Line Engraved Stamps. | Sefi, A.J. | 3pp |  | 1928 | 1.50 |
|-------|-----------------------------------------------------------------------------------------------------------------------------------------------------------------------------------------|------------|-----|--|------|------|

### **EXHIBITIONS - JUDGING**

- |       |                                                                                   |                           |      |  |      |      |
|-------|-----------------------------------------------------------------------------------|---------------------------|------|--|------|------|
| 13111 | A New Approach to Determining Qualifications as a Philatelic Judge.               | Odenweller, R.P.          | 6pp  |  | 1984 | 3.00 |
| 13110 | Hints For Competition Judges.                                                     | British Philatelic Assoc. | 2pp  |  | 1956 | 1.00 |
| 13107 | Philatelic Judging.                                                               | Odenweller, R.P.          | 27pp |  | 1983 | 9.25 |
| 13105 | Philatelic Judging: The Critique.                                                 | Odenweller, R.P.          | 8pp  |  | 1984 | 4.00 |
| 13106 | Philatelic Judging: What Credentials Are Needed by a Judge & How to Develop Them. | Odenweller, R.P.          | 8pp  |  | 1984 | 4.00 |

<b>EXHIBITIONS - SEALS, LABELS AND SOUVENIRS</b>							
13092	Philatelic Banquet Menus.	Trenchard, H.A.	6pp	ill	1996	3.00	
<b>FORGERIES AND COUNTERFEITS</b>							
13108	Buyer Beware. The Fake Stamps Are Out There.	Baadke, M.	2pp	ill	2000	1.00	
<b>INTERNATIONAL REPLY COUPONS</b>							
13138	International Reply Coupons.	Dow, J.D.	9pp		1939	4.50	
<b>LITERATURE</b>							
13143	Cumulative Index to the War Cover Bulletin 1940-72.	Brenner, C.D.	9pp		1973	4.50	
13127	Philatelic Subject Headings Used by Research Center Libraries.	Dowd, J.D.	3pp		1992	1.50	
<b>METERED MAIL</b>							
13100	Post Office Machines: Metered Mail-Coin Fed For Public Use.	Lutz, A.	4pp	ill	1981	2.00	
<b>MILITARY CONFLICTS</b>							
13116	Japanese Block Escape of Allies. (WW II)	Davis, T.	1pp	ill	1979	.50	
13137	Prisoners of War. Spy by Mail. (WW II)	Boughner, F.	3pp	ill	1981	1.50	
<b>OVERPRINTS AND SURCHARGES</b>							
13134	Overprints & Surcharges.	Tann, L.	2pp	ill	1985	1.00	
<b>PAPER</b>							
13101	Papermaking & Its Philatelic Influence.	Kehr, E.A.	3pp		1983	1.50	
<b>PAPER - WATERMARKS</b>							
13112	Watermark Is a Small But Important Detail.	Rod, S.J.	2pp	ill	1995	1.00	
<b>PHILATELY - HISTORY</b>							
13096	Philately's Earliest Days.	Herst, H.	3pp		1987	1.50	
13097	What's in a Name. (Philippe de Ferrary)	Tyler, V.E.	2pp	ill	1991	1.00	
<b>POSTAGE DUE</b>							
13098	Postage Due. Non-UPU to UPU.	Arfken, G.B. & Welch, B.	3pp	ill	1994	1.50	
<b>POSTAL HISTORY</b>							
13150	Postal History Notes. Rarity.	Cohn, E.M.	1pp		1986	.50	
13118	The Democracy of Philately.	Tower, W.H.	28pp	ill	1943	9.50	
<b>POSTAL MARKINGS</b>							
13147	Tracking the Six-Pointed Star.	Heifitz, M.	4pp	ill	1997	2.00	
<b>PRESERVATION</b>							
13140	How to Preserve Stamps & Covers.	Saggal, G.	6pp		1996	3.00	
<b>SE-TENANT ISSUES</b>							
13144	Se-tenant Stamps Are Different Designs United.	Baadke, M.	2pp	ill	2000	1.00	
<b>THEFT PREVENTION</b>							
13099	Customizing Can Cause Criminal Chagrin.	Lane, M.B.	1pp		1978	.50	
<b>TOPICAL COLLECTING - EUROPA</b>							
13128	Europa 1984 Bridge Design.	Lewy, E.	5pp	ill	1985	2.50	
<b>TOPICAL COLLECTING – FAIRYTALES AND FOLKTALES</b>							
13113	Fairytales Come True on Stamps.	Mueller, B.R.	6pp	ill	1968	3.00	
<b>TOPICAL COLLECTING – FAMOUS PEOPLE - COLUMBUS</b>							
13094	Columbus & The Hispanic Tradition.	Briggs, G.O.	2pp	ill	1994	1.00	
<b>TOPICAL COLLECTING – FAMOUS PEOPLE - CHURCHILL</b>							
13103	Karsh's Churchill Portrait.	Ehrmann, E.C.	1pp	ill	1965	.50	
<b>TOPICAL COLLECTING - MEDICINE</b>							
13133	The Scourge. (Leprosy)	Hamilton, B.	2pp	ill	1938	1.00	
<b>TOPICAL COLLECTING – MUSIC AND MUSICIANS</b>							
13114	Europa 1985—Some Musical Highlights.	Peat, S.	4pp	ill	1985	2.00	
13153	Music—How It Got That Way.	McAlister, C.	5pp	ill	1952	2.50	
13146	Still Going Strong. Bach & Handel: 300 Years Haven't Muted Their Music.	Duhe, L.	3pp	ill	1985	1.50	
<b>TOPICAL COLLECTING - RELIGION</b>							
13154	The Mass.	Bourgraf, G.	1pp		1952	.50	
<b>TOPICAL COLLECTING – SPORTS AND RECREATION</b>							
13141	Walking on Water. (Waterskiing)	Osborne, J.	2pp	ill	1985	1.00	
<b>TOPICAL COLLECTING - THEATER</b>							
13115	Pantomime! How It All Began, or Oh No, It Didn't Oh Yes It Did!	Bruce-Bowling, B.	4pp	ill	1985	2.00	
<b>TOPICAL COLLECTING - WOMEN</b>							
13136	Women on Postage Stamps.	Philadelphia Women's Stamp Club	4pp	ill	1951	2.00	



## **Book Review: United States Airmail Stamps, 1918**

### **Reviewed by Alan Warren**

*United States Airmail Stamps 1918* by Joe Kirker. 52 pages, card covers, saddle-stitched, 8 ½ by 11 inches, Gatlinburg, Tenn., 2014. \$25 postpaid in the USA from Joe Kirker, 529 Parton Drive, Gatlinburg TN 37738, or email Jenny1918joe@aol.com.

Author Joe Kirker has long been a student of the first three air mail stamps of the United States, known as the Curtiss Jenny issues. He has written extensively about them in over two dozen articles and monographs. The current book is subtitled *History and Analysis of First Day of Sale Postal Use*. This topic is distinct from the dates of the new air mail rates.

Kirker traces the sale of the first day of use of these stamps through auction catalogs. Some early catalog listings had the wrong issue dates and it was not until Irwin Heiman Auctions Sale No.175 in 1956 that first day of use covers were recognized. Prices realized for the covers were from \$55 to \$75 each but the values climbed with subsequent sales. Prices improved a year and a half later when another Heiman auction in 1957 offered more of these covers.

Prices for first day of use covers took off in sales in the 1970s. In a Siegel Rarities sale in 1976, a C1 on a 4-cent postal stationery envelope along with a 6-cent Washington-Franklin was purchased by Fleetwood for \$10,500 for their museum collection. To maintain value some items were submitted by owners to the Philatelic Foundation for certificates. Key players who owned some of these covers included Henry Goodkind, Philip Silver, and Lawrence Fisher.

Scott listed first day cover values of Scott C1-3 in italics for many years as they traded so infrequently. Auction prices soon soared to \$20,000, \$30,000 and over \$40,000. One oddball item is a curious cover bearing a torn C1 and cancelled at Washington, D.C. on December 10, 1918. The Philatelic Foundation offered no opinion and attempts to sell it “as is” have not been very successful.

Kirker then launches into an analysis of eighteen different cards and covers bearing these stamps. He begins with the 24-cent which was the first one issued, C3. For every item he shows illustrations, states the auction sale date and price realized for the item, mentions journal references where the item was discussed, expertization activity, and general observations by the author who has seen much of the material personally. Of the three C-3 covers, one is not genuine and two are questionable in Kirker’s mind.

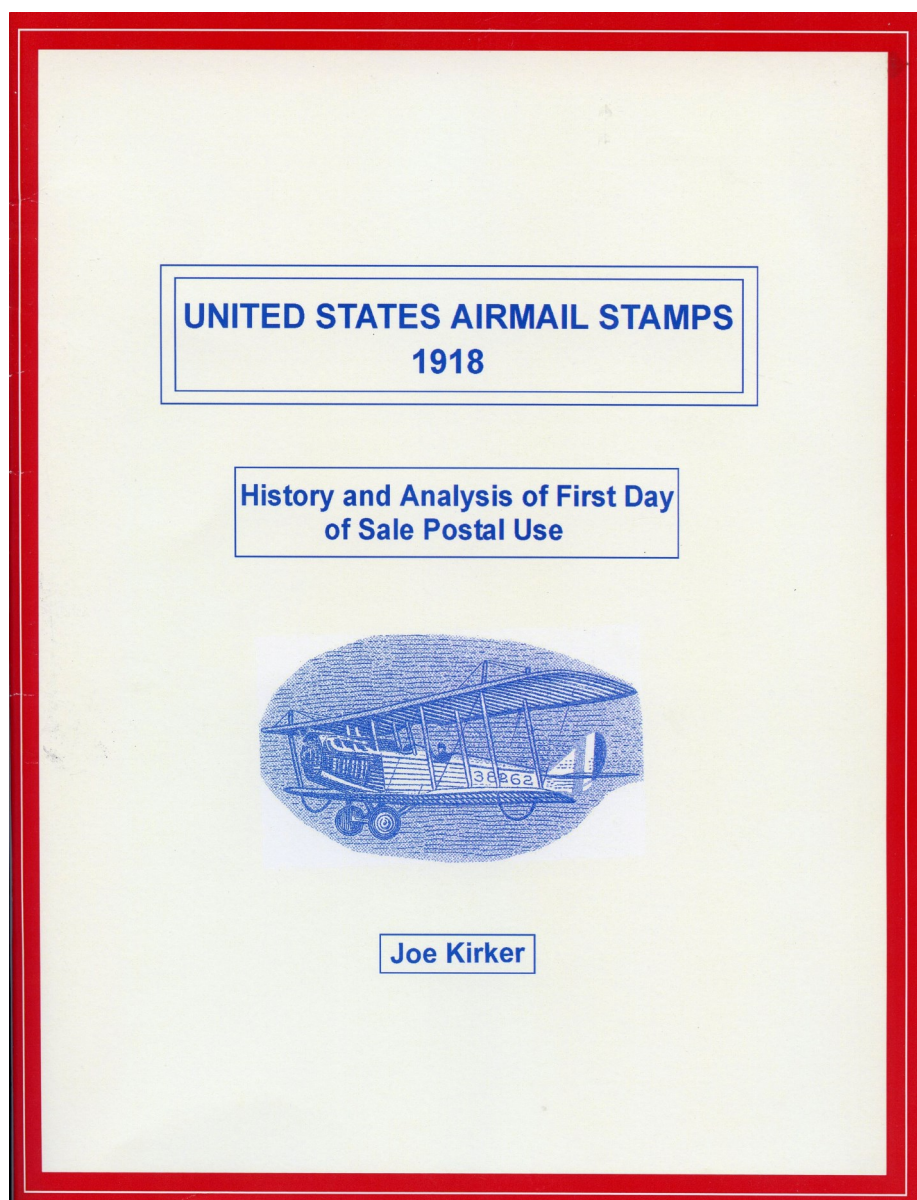
Six covers bearing the 16-cent C2 are analyzed with the following results: one genuine, one questionable, and four not genuine. In one case the PF issued a “genuine” certificate in 1979 and in 1991 an opinion, “The stamp did not originate on this cover.”

The 6-cent C1 has nine examples analyzed with December 10 cancels. Eight are deemed “not genuine” and only one is considered genuine. It was sold by Siegel in 2007 for \$42,500 and the Philatelic Foundation issued a “genuine” certificate the following year. Kirker feels that the items he deems “questionable” should be submitted for examination using some of the modern equipment and techniques that are now available.

The concluding section of Kirker's monograph is devoted to developing timelines for the three stamps. Claims are made that C-3 was available in Washington in the afternoon of May 13 but other sources state May 14. The rate went into effect May 15.

Some of the illustrations are poor, undoubtedly because they came from old auction catalogs or other dated sources. There is no official title page with date and place of publication on the verso. The pagination has the odd-numbered pages on the left instead of the right side. Literature references in the cover descriptions are vague. A good reference list is needed in standard bibliographic format.

However, the information in this monograph is from a veteran collector, author, and student of these issues. Having all of this first day of use information together in one source makes a handy reference for collectors and researchers.



# **FRIENDS OF THE WESTERN PHILATELIC LIBRARY** **MEMBERSHIP APPLICATION**

NAME_____	DATE_____
STREET_____	NEW MEMBER____ RENEWING____
CITY_____	PHONE (    )_____
STATE/COUNTRY_____ ZIP_____	PROPOSED BY_____
E-MAIL_____	

What are your collecting interests?

What literature would you like to see in the Philatelic Library? name specific titles and authors, if possible.

Would you be willing to make a donation of this publication to the library?

Do you have experience or knowledge in any of the following areas that could benefit the library?

Philatelic Literature	Publications	Typing
Postal History	Publicity Writing	Computer Maintenance
Library Work/Cataloging	Philatelic Writing	Database Programming
Public Speaking	Photography	Computer Interface Networking
Public Relations	Art/Graphics	Translation (specify Languages)

## **MEMBERSHIP DUES AND DONATIONS**

Please enroll me as a member of the Friends of the Western Philatelic Library, Inc.

Individual annual memberships, by calendar year, are: (all prices in USA \$)

Participating:	USA 20.00	Canada 22.00	Overseas (Air Mail) 28.00
Contributing:	USA 30.00	Canada 34.00	Overseas (Air Mail) 38.00
Other categories:	Life (no annual dues) 175.00	Life Overseas 200.00	Founder 1000.00

Enclosed:                      Membership\_\_\_\_\_                      Donations \_\_\_\_\_                      **Total** \_\_\_\_\_

Donations in any amount are appreciated. Donations to the Book Purchase Fund or Library Operation Fund may be specified. Please Note: All donations to the Friends of the Western Philatelic Library, above the membership amount, may be tax deductible! In appreciation to those who become a member at the Contributor level (or higher) may choose any book or literature on the "Bonus Book List" to be sent at no charge.

The Friends of the Western Philatelic Library, is an organization of philatelists assisting in the growth and maintenance of the Western Philatelic Library, located 40 miles south of San Francisco. The library is one of the largest public philatelic libraries in the United States today, containing over 3000 lineal feet of shelving for books, catalogs and bound periodicals, plus 48 drawers of unbound periodicals and 30 drawers of pamphlets with a 15 drawer index. We hope that you will want to join in the building of the future of the Western Philatelic Library. This can be done in many ways, as indicated by your offer to help with your time and talents or through donations of material. We need all types of philatelic publications, including books, catalogs and any other reference material. Any kind of literature which would be of use to beginner or advanced collector is desired. All donations will be acknowledged, and appropriate items will carry any attractive bookplate honoring its donor. Donations of material maybe directed to the Friends' Sunnyvale Post Office Box at low library postal rates.

## **Benefits of Membership include:**

1. *The Bay Phil*, bi-monthly newsletter of Reviews, Tear Sheets, Book Lists and publishing announcements.
2. Complimentary listing of new and duplicate books available in the Philatelic Library.
3. Complimentary price lists of philatelic literature and tear sheets available from stock.
4. Complimentary catalogs of auctions of literature and stamps to be held by the "Friends".
5. A discount of 10% on purchases of duplicate literature.
6. Submission of your suggested list of specific titles of philatelic literature, or your donation of publications so that others may also increase their philatelic knowledge.
7. Members Buy/Sell ads in *The Bay Phil*.

BP 305



P.O. Box 2219 - Sunnyvale, CA 94087

ADDRESS SERVICE REQUESTED

