

The Bay Phil

A publication of Friends of the Western Philatelic Library, Inc.,
an organization of philatelists assisting in the growth and maintenance of the
Western Philatelic Library, 1500 Partridge Ave., Bldg 6/ Room 6, Sunnyvale, CA
Mailing Address: FWPL, P.O. Box 2219, Sunnyvale, CA 94087-2219

March / April, 2011

V 41, No 2 , Whole number 286

ISSN 8756-5153

**WESTPEX 2011
29 April to 1 May**

**There will be duplicate
material available
FOR SALE every day**

**At noon on Sunday
1 May in room 5096
There will be a short presentation**

NEW MEMBERS

**Steve Taylor # 1644
(Freemont CA)**

Book Returns

The WPL exists as a resource for everyone. The lending policy is very lenient for anyone borrowing books or other items. Most members appreciate this service and use it well, including returning the items in a timely manner. However, a few overextend their borrowing time and stretch it to the limit. It makes more work and problems for the few volunteers that we have who need to chase down delinquent borrowers and call them for returns that are sometimes years old. Please check any of your borrowed books and return them so others might benefit from them. The alternative is one we don't like, the limiting of borrowers who are chronic extenders, by denying their borrowing privilege.

In This Issue ...

	page
New Members	1
Editor's Corner	2
Thank you	9
REVIEWS	
Detained, Interned, Incarcerated	3
George V and the G.P.O.:	4
Mexico's Denver Printing of 1914:	10
Tear Sheets	5-8
Membership Application	11



Friends of the Western Philatelic Library, Inc. APS Chapter 836

Preserving Philatelic History for the Future



CHAIR Stuart Leven (e-mail: stulev@ix.netcom.com)
V.C.- ACQUISITIONS Roger Skinner (e-mail: rogerskinner96@yahoo.com)
V.C.- MEMBERSHIP Dick Clever (e-mail: richard@asiaphilatelics.com)
SECRETARY Ed Laveroni (e-mail: ejpjl@comcast.net)
TREASURER Jo Skinner (e-mail: skinnerjo80@yahoo.com)
DIRECTOR Gil Goodrich (e-mail: gil.goodrich@sbcglobal.net)
DIRECTOR Pierre M Hahn (e-mail: pierre1928@gmail.com)
DIRECTOR Dr. John Kevin Doyle (e-mail: doyle-stamps@att.net)
DIRECTOR David Moore (e-mail dmoore56@pacbell.net)

— Staff —

WEB MASTER David Moore (e-mail dmoore56@pacbell.net)
BINDERY Lois Bertelson
BAY PHIL EDITOR Pierre M Hahn (e-mail: pierre1928@gmail.com)
Mailing address: **1388 Gough Street, Suite 1102
San Francisco, CA 94109**

Library Hours: Tuesday Noon to 5 PM
Wednesday Noon to 5 PM and 6 to 9 PM
Friday 10 AM to 5 PM, 6 to 9 PM
Saturday Noon to 5 PM

Visit our Web Site, at: **www.fwpl.org**
Scan our Tear Sheet listing at Leonard Hartmann's Internet Web Site:
www.pbbbooks.com

Ongoing Library Support

The Sunnyvale Public Library provides all of our facilities at the Raynor Activity Center at no charge to the Friends of WPL or patrons using the library. This is the major factor in our ability to stay in operation and enables us to devote the funds of FWPL to maintaining and building the collection itself.

BOARD MEETINGS

Regular Board meetings are open to all FWPL members. Meetings begin at 4:00 pm, the fourth Wednesday of each month, at the Western Philatelic Library at the Raynor Community Center. Feel free to drop in and see what is going on. You might call President Stuart Leven, (408) 978-0193, beforehand to confirm details of location, time and date.

Mission Statement

The Western Philatelic Library exists to enhance the preservation and dissemination of philatelic knowledge by acquiring, organizing, interpreting and distributing information resources in a globally networked community.

WPL Vision Statement

We will be known as setting the standard for providing a responsive, convenient gateway to philatelic knowledge.

Our Commitments:

- To build and conserve a world-class collection of printed, electronic and other media;
- To support, extend and enrich the pursuit of knowledge and enjoyment through stamp collecting;
- To provide access and support for beginners, hobbyists, specialists, writers and postal historians;
- To promote knowledge through public educational events and displays; and
- To collaborate and cooperate with other libraries.

Editor's Corner

I find that my time to spend on my stamp collection has diminished to the point that I am no longer progressing. I have indicated to the board that I need to give up this enjoyable work so that I can concentrate a little more on my own stamps.

If you are someone who can do a modicum of writing putting together *The Bay Phil* is something I have enjoyed and has been very rewarding.

Please contact the board or myself if you think you could undertake this kind of effort.

I will be available and will gladly help you get started.

Pierre M Hahn, Editor

THE BAY PHIL

The *Bay Phil* is the bi-monthly newsletter of the Friends of the Western Philatelic Library (FWPL), a non-profit organization. The contents of *The Bay Phil* are copyrighted © 2011 by FWPL. It has always been our policy that material can be used in whole or in part by individuals or other non-profit organizations, provided credit is given to *The Bay Phil* and the individual authors of the reproduced material. A copy of the publication in which the material is printed is requested to be provided for our archives.

Reviewed by *Leonard Piszkievicz*

Detained, Interned, Incarcerated — U.S. Enemy Noncombatant Mail in World War II by Louis Fiset with contributions by Richard W. Helbock. Collectors Club of Chicago, 2010; hardbound with dust jacket, 8½" x 11", 234 pp.; ISBN No. 978-0-9827357-1-8, \$65.00 postpaid in U.S. from Collectors Club of Chicago, 1029 N. Dearborn St., Chicago, IL 60610.

The postal history of the Second World War has been collected and studied by researchers for decades, and much has been written about the events, military units, rates and routes of mail transport. Comparatively little attention has been given to one aspect of the war period, namely, civilian noncombatants caught on the “wrong side” of the lines of battle or caught in situations where they came to be regarded as potential threats in the locations where they were “caught.”

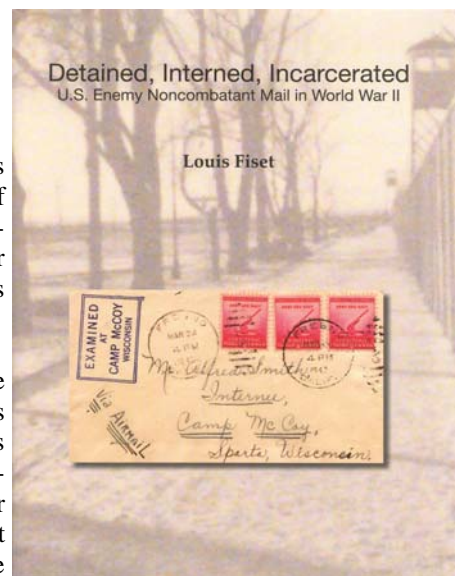
Detained, Interned, Incarcerated explores the various groups of civilians caught up in these situations, presenting the first summary of the postal history associated with these various groups in the United States. Most collectors are aware of the thousands of both citizens and aliens of Japanese ancestry who were removed from the Pacific coast states and interned at inland locations. Covers and cards generated by this large population (over 100,000 people) are relatively easily found, but since their mail was not censored (except in a few special or erroneous circumstances), and since the rates paid on such mail were those in common use for the most part (excluding drop letters), such postal history hasn't been pursued, except by a few specialists. There were, however, groups of noncombatants who were subject to what amounted to incarceration, including censorship of all their incoming and outgoing mail. Camps operated by the War Department and later by the Justice Department held these individuals, and postal history associated with each is discussed.

Fiset's volume treats each of these groups separately and shows many examples of mail associated with them. These groups, represented by chapters in the book, include merchant seamen, resident foreign nationals (“enemy aliens” – German and Italian in addition to Japanese), diplomats (together with their families and staffs), and enemy aliens deported from Latin American countries to the United States. Other chapters explore internment in Hawaii under martial law immediately after the Pearl Harbor attack, diplomatic exchanges of internees with Japan carried out with the M.S. Gripsholm, postal history of Japanese-Americans who became part of the legendary 442nd Regimental Combat Team, and Aleuts evacuated from the Aleutian Islands after the Japanese occupation of Attu and Kiska Islands.

The book is profusely illustrated in color, showing many examples of covers and cards in each chapter, along with tables of data summarizing dates of the movements of residents (i.e., inmates) into and out of the camps, numbers of individuals held, and operational dates of camps and post offices. The chapters represent a prodigious amount of research, available now for the first time in one easy to read volume. However, the chapter on the displaced Aleuts shows no mail associated with the evacuees during their time on the three islands in southeastern Alaska to which they were moved. (A few covers and cards of military origin from the area are illustrated.) This is most likely because such mail would be unrecognizable unless one was aware of the history behind the cover. The author includes a detailed listing of the surnames of the Aleut evacuees listed according to which islands they evacuated and the islands and camps to which they were evacuated and post offices at which their mail was postmarked. Most of the Aleuts had Russian surnames (for historical reasons), so the casual collector probably wouldn't know that, but that would be a major clue to identifying displaced Aleuts' mail. Hopefully, with the publication of the data in this chapter, covers will be discovered.

The book shows high production quality and includes a CD (in a pocket on the inside back cover) containing PDF files of three of the author's exhibits of this material. The book, however, would have benefitted from proofreading by an independent reader, as there are problems with several figures – incorrect illustrations for the captions (Figure 9.17 – correct cover is included in the “Incarceration” exhibit on the CD) or incorrect descriptions in the text of the figures (Figures 1.3, 1.28, 11.28). The author also uses the terms “Nisei” and “Nikkei” seemingly interchangeably (e.g., Figure 10.12 caption) and doesn't explain that “Nisei” refers specifically to the first generation born in the U.S. while “Nikkei” more generally refers to those of Japanese ancestry. These matters are minor, however, in the overall accomplishment that this book represents.

This volume would be a valuable addition to the library of any collector with an interest in the postal history of the World War II era and is highly recommended.



Book Review By *Larry Rosenblum*

George V and the G.P.O.: Stamps, Conflict and Creativity by Douglas N. Muir. 275 pages, 7 1/4 by 8 3/4 inches, soft cover. The British Postal Museum & Archive, London, 2010. ISBN 978-0-9553569-2-6, £19.95 plus postage from BPMA, Freeling House, Phoenix Place, London UK WC1X 0DL or <http://shop.postalheritage.org.uk>.

Douglas Muir, Curator of Philately at the BPMA, has written another excellent book on British philately. This book was published in May, 2010 to accompany the Festival of Stamps, Britain's year-long celebration of the centenary of King George V's accession to the throne. The highlight of the Festival was the London 2010 International Stamp Exhibition held in May.

King George V is well known to collectors as the “philatelist king.” He was a serious collector since his teen years, coached by his uncle, Alfred, Duke of Edinburgh (fourth child of Queen Victoria), who was a well-known collector. He served in the Royal Navy and so was able to personally obtain stamps from around the world.



When his elder brother died in 1892, George became second in line to the throne (after his father who became King Edward VII). Though only 27 at that time, he began to take his collecting seriously and even hired a philatelic advisor, John Tilleard. When he married the next year, classic stamps were among the wedding gifts.

King George V reigned for 26 years. That was a time of great progress and many challenges, both philatelic and cultural. Muir's book deftly covers both. For example, chapter 13 is titled, “An Ocean of Air, Airmail: The Great Adventure.” It describes both the advancement of flying and the development of airmail, along with details of flight covers and postal markings of the period.

Philatelic developments are treated in depth. Muir went back to original sources, where available, and has put together the material together in comprehensive and readable form. The text is well footnoted. The book has many illustrations, all in full color where available.

Philatelic topics treated in depth are the disastrous first stamps of the reign, which had a three-quarter portrait of the King, and their rapid replacement with a profile design; the superb high values featuring Britannia riding a horse-drawn chariot into the sea (known even then as “Seahorses”); the first postage dues; the first commemoratives; the first stamps printed by photogravure; and, finally, the Silver Jubilee issue and the proposed but unissued mourning stamps.

The cover of the book pictured here is an enlargement of an unadopted design for the King's Silver Jubilee. Muir calls it “one of the most beautiful stamp designs never produced.”

Muir's book can serve equally well as an introduction to the period for a newcomer to this era and as a refresher with much new information for the experienced collector. I recommend it highly.



Tear Sheet List

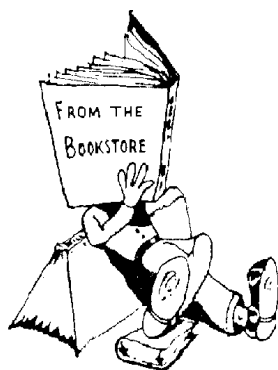
FWPL BOOKSTORE
P.O. Box 2219
Sunnyvale, CA 94087

One of the policies of the friends of the Western Philatelic Library is to inform members about the availability of duplicate material. Any item listed here may be purchased by sending your payment to the address at the right. The funds received from sales help with operational expenses and go toward acquisitions we otherwise could not obtain. Please remember to add the postage costs: 44-cents for each 4 pages ordered.

A growing list of tear sheets is available through our website at www.fwpl.org/tearshts.htm, which also links to tear sheets on Leonard Hartmann's Internet Web Site: www.pbbooks.com

ARGENTINA – BUENOS AIRES							
14165	Philatelic By-ways. Buenos Aires.	Yost, H.	2pp	ill	1955	.30	
BELGIAN CONGO							
14133	Belgian Congo 'Find'.	Hurt, E.F.	1pp		1935	.15	
14134	Belgian Congo The "Lado" Territory.	Hurt, E.F.	2pp	ill	1936	.30	
BELGIUM							
14132	Belgium. Some Notes on the 1915 50 c Die.	Hurt, E.F.	2pp	ill	1936	.30	
BOLIVIA							
14135	Bolivia—5 Centavos Yellow Green, 1861.	Gilbert, G.	4pp	ill	1940	.60	
BRAZIL							
14166	The 100 th Anniversary of the "Bulls Eyes" Stamps of Brazil as Seen Thru the Medium of the Collection of Mr. Saul Newbury. Brookman, L.G.		20pp	ill	1943	3.00	
CHINA							
14136	Discovered-The 3 Candarin Stamp From the Retouched Plate.	Chow, M.D.	2pp	ill	1940	.30	
COLOMBIA							
14148	The Postal Services of the Colombian States and Departments.	Myer, J.N.	7pp	ill	1937	1.00	
14137	The Red Cross Tax Stamps of Colombia.	Myer, J.N.	2pp	ill	1937	.30	
COSTA RICA							
14149	Costa Rica 1862-65. Some Notes on the Printings.	Hurt, E.F.	1pp		1936	.15	
DANISH WEST INDIES							
14167	Colors of the Octagonal S THOMAS Mark on Mail From the Danish West Indies to Puerto Rico, 1847-1870.	Klugman, K.P.	4pp	ill	1990	.60	
14168	Translations From Kohl's Handbook. Danish West Indies.	Munk, H.	31pp	ill	1935-36	4.65	
DENMARK							
14106	A Story of Hans Christian Andersen as Reflected on Designs On Current Danish Stamps.	Kiely, A.P.	2pp	ill	1935	.30	
14107	Danish Numeral Cancellations.	Konwiser, H.M.	3pp	ill	1939	.45	
ECUADOR							
14108	Uproar Over Ecuador's National Anthem Issue. (Scott 734-737)		1pp		1965	.15	
EGYPT							
14150	Egypt. Postmarks Used in French Offices in Egypt.	Hurt, E.F.	3pp	ill	1936	.45	
14138	The PMG of Egypt is Interviewed.	Leib, O.S.	2pp		1957	.30	
ESTONIA							
14139	The Postal History of Estonia in Transition.	Miller, K.	3pp	ill	1995	.45	
EUROPE							
14109	Varieties of Style in the Stamps of Europe.	Hammacher, A.M.	8pp		1935-36	1.20	
FRANCE							
14140	Famous Men.	Christensen, A.	2pp		1955	.30	
14152	France. Forgeries of the 25 Cent Blue "Sower".	Hurt, E.F.	1pp	ill	1935	.15	
14143	France 1884. The "1/2 C" Surcharge for Newspapers.	Hurt, E.F.	1pp	ill	1936	.15	
14153	French Postal History Bibliography. A Book Review.	Stone, R.G.	2pp		1971	.30	
14110	Jacques Callot, Great French Engraver.	Kiely, A.P.	2pp	ill	1936	.30	
14141	Siege Air Mails 1870-71. A Book Review.	Cohn, E.M.	1pp		1990	.15	
14151	The Army Postmarks of the Consulate First Republic & Napoleon I. (1794-1814)	Hurt, E.F.	5pp	ill	1936	.75	
14142	The Pichot Essays of France.	Hurt, E.F.	1pp	ill	1936	.15	
GERMANY							
14111	Thoughts on Philatelic Censuses With a Case Study of the February 1871 German Censor Markings at Versailles.	Luft, S.J.	5pp	ill	1988	.75	
14112	1923 Cover With 500,000,000 Marks of Postage.		1pp	ill	1980	.15	
GERMANY - BREMEN							
14169	Bremen.	Dillingham, M.C.	5pp	ill	1958	.75	

GERMANY – SCHLESWIG-HOLSTEIN							
14170	The Duchies of Schleswig-Holstein.	Dillingham, M.C.	3pp	ill	1958	.45	
GREECE							
14154	Confusion and Exasperation.	Zang, L.C.	3pp	ill	1958	.45	
GREENLAND							
14171	The Mail Service To & From Greenland Under the Royal Greenland Company.	Hurt, E.F.	18pp	ill	1940	2.70	
IRAQ							
14113	The Overprinted Stamps for Mosul.	Higlett, G.A.	1pp		1927	.15	
ISRAEL							
14155	Collectors Club. The Clubhouse Meeting. Judaica Historical Philatelic Society.	Bart, J.	3pp	ill	1965	.45	
14156	Jewish History in Philately. A Book Review.	Richter, J.H.	4pp		1971	.60	
ITALY							
14114	Italian Stamp Colors.		1pp	ill	2005	.15	
JAPAN							
14115	Japan. The Forgeries of the 1871-72 Issues.	Hurt, E.F.	2pp	ill	1936	.30	
14144	Nippon Notables. (Scott 480-497)		1pp	ill	1950	.15	
14145	The Four Plum Blossom Stamps.	Mishima, Y.	2pp	ill	1951	.30	
LATIN AMERICA							
14146	A 40-year-old Postal Tribute to Lindbergh's Good Will Tour.	Sellers, F.B.	4pp	ill	1968	.60	
LUXEMBURG							
14147	Railway Postmarks of Luxemburg.	Cash, B.L.	3pp	ill	1936	.45	
MEXICO							
14161	Auction Catalogs of Mexico and States.	Trenchard, H.A.	3pp		1968	.45	
14160	Mexican Philatelic Research Bibliography.	Pawley, L.W.	24pp		1968	3.60	
14157	Mexico. An Unrecorded British Postmark.	Hurt, E.F.	1pp	ill	1935	.15	
14158	Selected Notes on the Postage Stamps of Mexico.	Ingham, F.G.	2pp		1968	.30	
14159	Thumbnail Sketch of Mexican Postal History.	Mahon, J.	2pp		1968	.30	
MONGOLIA							
14172	Bibliography of Mongolian Philately.	Negus, J.	5pp		1963	.75	
NORWAY							
14162	Norsk-Engelsk-Tysk Vocabular.		2pp		Unk	.30	
14116	Oscar II Stamps of Norway.		1pp		1939	.15	
14117	The Stamps of Spitzbergen.	Hurt, E.F.	1pp	ill	1935	.15	
PHILIPPINES							
14119	Focus on Forgeries. Philippines. 1864 3 1/8 Centavo Queen Isabella II Issue. (Facing Left). Scott 21.	Tyler, V.E.	1pp	ill	1998	.15	
14118	Obituary. Percy A. Hill		2pp		1937	.15	
POLAND							
14173	A Polish Puzzle in Italy.	Moore, H.	4pp	ill	1991	.60	
PORTUGUESE COLONIES							
14120	Portuguese Colonies and the New York World's Fair.	Myer, J.N.	3pp		1943	.45	
ROMANIA							
14121	Fake Expert Signature. (Rudolf Zoscak)	Pataki, G.	1pp	ill	1978	.15	
RUSSIA							
14122	From Russia With Love. (Czech Legions in Siberia)	Black, B.	2pp	ill	1986	.30	
14174	World War One Aftermath Issues-Russian Zone	Bledsoe, A.	2pp		1958	.30	
RUSSIA – SOUTH RUSSIA							
14127	South Russian St. George.		1pp	ill	2005	.15	
RYUKYU ISLANDS							
14125	A Study of the 1952 Ryukyu 10 Yen on 50 Sen Surcharge for The New Specialist.	IRSACS Bulletin	6pp	ill	1957	.90	
14124	Ryukyu Islands Christmas Seals.	Fujita, T.	1pp		1956	.15	
14126	Ryukyu Scout and Karate Issues.	Wong, J.	2pp	ill	1965	.30	
14123	Ryukyu Stamps for the New Specialist.	Faries, B.	9pp	ill	1957	1.35	
SPAIN							
14128	Correos 1851 De Espana.	De Alzo, G.	2pp	ill	Unk	.30	
UKRAINE							
14129	Ukraine Scouts.		1pp	ill	Unk	.15	
14163	Uncommon Use of Common Stamps. Ukraine 1919, Polish-Russian War.	Palmer, D.	1pp	ill	1965	.15	
UNITED NATIONS							
14164	United Nations Meter Stamps.	Swan, W.M.	1pp		1958	.15	
14130	United Nations Postal History. United Nations Day.	Robinson, N.G.	3pp	ill	1980	.45	
URUGUAY							
14131	Eastern Shore Stamps.	Rich, S.G.	2pp	ill	1953	.30	



Tear Sheet List

FWPL BOOKSTORE
P.O. Box 2219
Sunnyvale, CA 94087

One of the policies of the friends of the Western Philatelic Library is to inform members about the availability of duplicate material. Any item listed here may be purchased by sending your payment to the address at the right. The funds received from sales help with operational expenses and go toward acquisitions we otherwise could not obtain. Please remember to add the postage costs: 44-cents for each 4 pages ordered.

A growing list of tear sheets is available through our website at www.fwpl.org/tearshts.htm, which also links to tear sheets on Leonard Hartmann's Internet Web Site: www.pbbooks.com

UNITED STATES - HAWAII

- | | | | | | | |
|-------|----------------------------------|--------------|------|-----|---------|------|
| 13512 | The Hawaiian 'Missionaries'. | Williams, N. | 6pp | ill | 1985 | .90 |
| 13518 | Transporting the Hawaiian Mails. | Pompey, S.L. | 18pp | ill | 1952-53 | 2.70 |

UNITED STATES - ILLINOIS

- | | | | | | | |
|-------|--|-----------------|-----|-----|------|-----|
| 10996 | Aaron Montgomery Ward—Chicago's Pioneer Ecologist. | Adlerblum, B.S. | 5pp | ill | 1972 | .75 |
|-------|--|-----------------|-----|-----|------|-----|

UNITED STATES - MAINE

- | | | | | | | |
|-------|---------------------------------|-----------|-----|-----|------|-----|
| 10979 | The Postmarks of Bangor, Maine. | Dow, S.T. | 2pp | ill | 1941 | .30 |
|-------|---------------------------------|-----------|-----|-----|------|-----|

UNITED STATES - MASSACHUSETTS

- | | | | | | | |
|-------|---|------------|-----|-----|------|------|
| 10997 | Newburyport Postmaster Moulton's Killers. | Hahn, C.M. | 7pp | ill | 1984 | 1.00 |
|-------|---|------------|-----|-----|------|------|

UNITED STATES - MICHIGAN

- | | | | | | | |
|-------|--|--------------|-----|--|------|-----|
| 13513 | Early Post Offices-Marquette Iron Range. | Rankin, E.H. | 1pp | | 1964 | .15 |
|-------|--|--------------|-----|--|------|-----|

UNITED STATES AIR MAIL

- | | | | | | | |
|-------|---|----------------|-----|-----|------|-----|
| 10967 | Standard Time Marking Mystery Solved. | Hotchner, J.M. | 2pp | ill | 1992 | .30 |
| 10968 | The First Air Mail Letter. | Pollock, E.L. | 3pp | ill | 1936 | .45 |
| 13527 | USA—West Indies Air Mail Services, Started Sept. 22, 1929. | | 1pp | | 1930 | .15 |
| 10978 | Zeppity Due Da! (High value Postage Due Stamps on a Zeppelin cover) | Spooner, R.B. | 3pp | ill | 1991 | .45 |

UNITED STATES CHRISTMAS SEALS

- | | | | | | | |
|-------|---|----------------|-----|-----|------|-----|
| 13528 | Evidence of an "Unmailable" Seal Finally Found. | Hotchner, J.M. | 2pp | ill | 2001 | .30 |
|-------|---|----------------|-----|-----|------|-----|

UNITED STATES CIVIL WAR - CONFEDERACY

- | | | | | | | |
|-------|--|-----------------|-----|-----|------|------|
| 13501 | Confederate Notes. How the Fighting Men of the 5 th Texas Regiment C.S.A. Got Their Letters Across the Mississippi to Texas. | Shenfield, L.L. | 4pp | ill | 1943 | .60 |
| 10985 | Confederate States of America. The Essay Die Proofs of Issued Stamps Printed in Richmond. The "SPECIMEN" Overprints of The De La Rue Printing. | Shenfield, L.L. | 7pp | ill | 1957 | 1.00 |
| 13502 | New Discovery. Southern Express Company Office Marking of Vicksburg, Miss. | Shenfield, L.L. | 2pp | ill | 1943 | .30 |
| 10969 | The Philately of the Confederacy. | Foldvary, F. | 1pp | | 1994 | .15 |

UNITED STATES COLLECTING

- | | | | | | | |
|-------|---------------------|----------|-----|--|------|-----|
| 10971 | Alphabetized Lists. | Bush, J. | 4pp | | 1994 | .60 |
|-------|---------------------|----------|-----|--|------|-----|

UNITED STATES COVERS

- | | | | | | | |
|-------|---|------------|-----|-----|------|-----|
| 13509 | Two Covers. (Linden, NY with 1861 issues) | Hahn, C.M. | 2pp | ill | 1987 | .30 |
|-------|---|------------|-----|-----|------|-----|

UNITED STATES COVERS - PATRIOTIC

- | | | | | | | |
|-------|-------------------------------------|-------------|-----|-----|------|-----|
| 13505 | Patriotic U.S. Civil War Postcards. | Schwarz, T. | 2pp | ill | 1977 | .30 |
|-------|-------------------------------------|-------------|-----|-----|------|-----|

UNITED STATES GRILLS

- | | | | | | | |
|-------|---------------------------------------|-----------|-----|-----|------|-----|
| 10970 | Some Tips on Identifying U.S. Grills. | Herst, H. | 1pp | ill | 1995 | .15 |
|-------|---------------------------------------|-----------|-----|-----|------|-----|

UNITED STATES LITERATURE WITH PHILATELIC THEMES

- | | | | | | | |
|-------|--|---------------|-----|--|------|-----|
| 10999 | Book Review. U.S. Postal Activities in China, by Meisu Mizuhara. | Stollnitz, H. | 4pp | | 1983 | .60 |
|-------|--|---------------|-----|--|------|-----|

UNITED STATES METERED MAIL

- | | | | | | | |
|-------|--|------------|-----|-----|------|-----|
| 13510 | Introduction to Collecting Meter Stamps. | Kelsey, D. | 2pp | ill | 1992 | .30 |
|-------|--|------------|-----|-----|------|-----|

UNITED STATES OFFICES ABROAD

- | | | | | | | |
|-------|---|------------|-----|-----|------|-----|
| 13532 | Viewing the Drucker Offices in China and Japan. | Dunn, J.R. | 4pp | ill | 2003 | .60 |
|-------|---|------------|-----|-----|------|-----|

UNITED STATES PARCEL POST

- | | | | | | | |
|-------|-------------|------------|-----|-----|------|-----|
| 13530 | A Q1 Cover. | Wren, G.R. | 1pp | ill | 1998 | .15 |
|-------|-------------|------------|-----|-----|------|-----|

UNITED STATES PLATE BLOCKS AND NUMBERS

- | | | | | | | |
|-------|---|--------------|------|-----|------|------|
| 10990 | Plate Number Blocks Belong in Every Serious Collection. | Rose, J. | 2pp | ill | 1988 | .30 |
| 10993 | 1984 Supplement. A Census of U.S. Classic Plate Blocks. | Chapin, J.C. | 13pp | ill | 1984 | 1.95 |

UNITED STATES POST OFFICE OPERATIONS

- | | | | | | | |
|-------|----------------------------------|------------|-----|-----|------|-----|
| 13531 | Those Brightly Colored Stickers. | Lake, R.H. | 3pp | ill | 1977 | .45 |
|-------|----------------------------------|------------|-----|-----|------|-----|

UNITED STATES POSTAL HISTORY							
10995	An Outline of United States-Canada Mails, 1847-1875.	McDonald, S.M.	5pp	ill	1972	.75	
13503	Early Census Takers Were Federal Marshals.	Graham, R.B.	2pp	ill	1990	.30	
10994	The Louisiana Tehuantepec Company.	Lentz, A.H.	7pp	ill	1972	1.00	
UNITED STATES POSTAL MARKINGS							
10982	The Mystery of Puerto Plato.	Bertsch, J.	4pp	ill	1998	.60	
UNITED STATES POSTAL OFFICIALS							
10980	Correspondence Tells Story of Deputy Postmaster General Ben Franklin.	Arnell, J.C.	3pp	ill	1994	.45	
UNITED STATES POSTAL RATES							
10991	Research Explains Unusual Rates.	Hahn, C.M.	2pp	ill	1983	.30	
13514	Surtax.	Arfken, G.	2pp	ill	1992	.30	
UNITED STATES POSTAL STATIONERY							
10998	An Envelope Story.	Cichorz, R.S.	1pp	ill	1980	.15	
UNITED STATES PRECANCELS							
13519	National Defense Issue Bureau Prints.	Rich, S.G.	1pp		1941	.15	
10986	Parade of Bureau Precancels . Kansas.	Gunesch, A.	1pp	ill	1959	.15	
UNITED STATES PRODUCTION - GUM							
13521	Dry Gum Becomes Postal History.	Brockert, J.	2pp	ill	1982	.30	
13522	Gum Can Cause Problems, Varieties.	Brockert, J.	2pp	ill	1982	.30	
10972	Gum Characterization by Infrared Spectroscopy. Hanneman, W.W. & Hintze, R.E.		2pp	ill	1991	.30	
10981	The Stamp Gum Story: Shiny to Dull.	Faries, B.	3pp	ill	1982	.45	
UNITED STATES RAILWAY MAIL							
13506	More on Covers Carried by Fast Mail Trains.	Graham, R.B.	3pp	ill	2000	.45	
UNITED STATES RESEARCH METHODS							
13504	Is There An End to Philatelic Study?	Brett, G.	4pp		1984	.60	
UNITED STATES REVENUES							
10973	In Old Connecticut. (Paper Mill & Match Factories)	Holcombe, H.W.	6pp	ill	1936	.90	
13516	Private Die Proprietary Stamp Notes. S.B. Hartmann & Co.-Mishler Herb Bitters Co.	Holcombe, H.W.	8pp	ill	1940	1.20	
13520	Two Varieties Result From Multiple Prints.	Hoffman, D.	1pp		1977	.15	
13515	U.S.I.R. Beer Stamps. A Catalog Listing of Essays and Proofs.	Brazer, C.W. & Holcombe, H.W.	19pp	ill	1941	2.85	
10987	5 Cent, 10 Cent Values Constituted First War-era Stamped Paper.	Irwin, R.	4pp	ill	1997	.60	
UNITED STATES SEALES AND LABELS							
13511	Philatelic Labels.	Linn, G.W.	4pp		1938	.60	
UNITED STATES SPECIALIZED - 1847							
13507	The 10 Cent 1847 U.S. Issue—a Famous 'Find'.	Rose, J.	2pp	ill	1977	.30	
UNITED STATES SPECIALIZED – 1851-1857							
13524	Plain Lines Frame Design of 3 Cent Issues.	Mueller, B.R.	2pp	ill	1975	.30	
13523	Studying Frame Elements, Type Differences.	Mueller, B.R.	2pp	ill	1974	.30	
10988	The Varieties of the U.S. 12 Cent 1851-57.	Tracy, J.K.	3pp	ill	1926	.45	
UNITED STATES SPECIALIZED – 1870-1887							
10989	The Large Franklins. Three Printers Had a Turn at These 1 Cent Bank Note Stamps.	Rose, J.	2pp	ill	1987	.30	
UNITED STATES SPECIALIZED – 1870-1890							
13525	'Invisible Secret Mark' Poses Unsolved Mystery.	Mueller, B.R.	1pp		Unk	.15	
13529	Simple Steps to Sorting Various Bank Note Issues.	Mueller, B.R.	1pp		Unk	.15	
UNITED STATES SPECIALIZED - 1873							
10974	Bank Note Secret Marks Puzzling.	Mueller, B.R.	1pp		1973	.15	
10983	Bank Note Stamps Find Wide Foreign Mail Use.	Mueller, B.R.	1pp		Unk	.15	
10984	Simplest Bank Note Group Attracts, Repels Philatelists.	Mueller, B.R.	2pp		Unk	.30	
UNITED STATES SPECIALIZED – 1894							
10975	BEP's Stamp Printing Career Began With 1894 Definitives.	Rose, J.	1pp	ill	Unk	.15	
10976	Higher Values. Why Were the Scarce \$2 & \$5 Issues Needed in 1894?	Rose, J.	1pp	ill	Unk	.15	
UNITED STATES SPECIALIZED – 1898-1900							
13508	Low Value Issues of 1898-1900 Open Up a World of Rediscovery.	Rose, J.	3pp	ill	1987	.45	
UNITED STATES SPECIALIZED – 1902-1903							
13517	United States Portrait Stamps of 1902-03.	Mueller, B.R.	4pp	ill	1968	.60	
UNITED STATES SPECIALIZED - 1904							
13500	Louisiana. Subjects Abounded for 1904 Series.	Rose, J.	2pp	ill	1987	.30	
UNITED STATES SPECIALIZED - 1909							
10977	Two Early 1900's Issues Dismissed by Collectors Deserve Recognition. (Hudson-Fulton Issue, Scott 372-373)	Rose, J.	2pp	ill	Unk	.30	
UNITED STATES SPECIALIZED – 1975-1983							
13526	Americana Series 1975-83.	Lawrence, K.	31pp	ill	1995	4.65	
TOPICAL COLLECTING - SHIPS							
10992	Ships of the American Revolution.	Last, B.	6pp	ill	1977	.90	

Gifts, bequeaths and donations are gratefully accepted
It is how the WPL keeps going and grows for your benefit

WE THANK EACH OF YOU

Richard Clever (San Jose CA) 10 issues of philatelic journals and other philatelic material.
Richard Clever (San Jose CA) 15 issues of philatelic journals, 4 auction catalogues, 2 stock books.
Ken Goss (Fremont CA) 11 stamp catalogues, 6 auction catalogues.
Thomas T. Graham (San Jose CA) 83 issues of philatelic journals.
Gale Hamilton (USA) 2 Minkus binders with pages.
George L. Henderson (San Mateo CA) 63 issues of philatelic journal.
Wally Jouliff (Sunnyvale CA) 10 books, 7 catalogues and 180 philatelic covers.
Charles J LaBlonde (Colorado Springs CO) 85 issues of philatelic journals, 23 auction catalogues.
Hugh Lawrence (Encinitas CA) 154 auction and sale catalogues.
Penelope Martell (San Jose CA) 23 stamp catalogues and 8 philatelic journals.
Len McMaster (Capon Bridge WV) 10 issues of philatelic journal.
Ron Mitchell (Denver CO) Mexico's Denver Printing of 1914.
Louise Ritz (Sunnyvale CA) Mint US stamps, first day covers and philatelic material.
Larry Rosenbum (Sunnyvale CA) 63 issues philatelic journals and 4 price lists.
Stephen D Schumann (Hayward CA) 148 auction catalogues, 25 philatelic journals and 10 books.
Stephen D Schumann (Hayward CA) INDIPEX catalogue and Palmars.
George Shalimoff (Sebastopol CA) 19 auction catalogues and price lists.
J C Vadeboncoeur (Cupertino CA) boxes of philatelic catalogues, magazines and journals.
Alan Warren (Exton PA) 2 books.

We also thank all the volunteers who spend hours helping at the library.

We have recently started a building fund to be able to
have a permanent space to house all our
very special books, catalogues and periodicals.

We would appreciate all contributions to this fund.

Reviewed by Alan Warren

Mexico's Denver Printing of 1914: Postage and Revenue Stamps for the Provisional Constitutionalist Government by Ron Mitchell. 156 pages, 8 ½ by 11 inches, casebound, plus DVD of images, Rocky Mountain Philatelic Library, Denver CO, 2010. ISBN 978-0-9773578-2-6, \$50 postpaid to USA addresses, \$58 to Canada, \$66 to Mexico, \$70 elsewhere from Rocky Mountain Philatelic Library, 2038 So. Pontiac Way, Denver CO 80224.

This is the story of the production and usage of five Mexican revenue stamps used as postage and the related eight stamps for regular postage, known as the Denver Eagles. The fascinating story revolves around the Mexico Revolution of 1914-1916, the only stamps printed in Denver for foreign use, and the 35 years of research conducted by author Ron Mitchell. The first chapter sets the stage by identifying the key leaders in the revolution and the first attempts by the rebels who took over the postal service and provided the needed stamps.

Although the Constitutionalist government approached George W. Linn with a request to produce stamps, friends also contacted the Smith-Brooks Printing Company in Denver, Col., and that firm received a firm order in March 1914. By June the new revenue stamps and Denver Eagles were delivered to Mexico. The designing, including secret marks, and the preparation of the plates are summarized. Printing, use of control marks, trial color proofs, perforation anomalies and other production details are described.

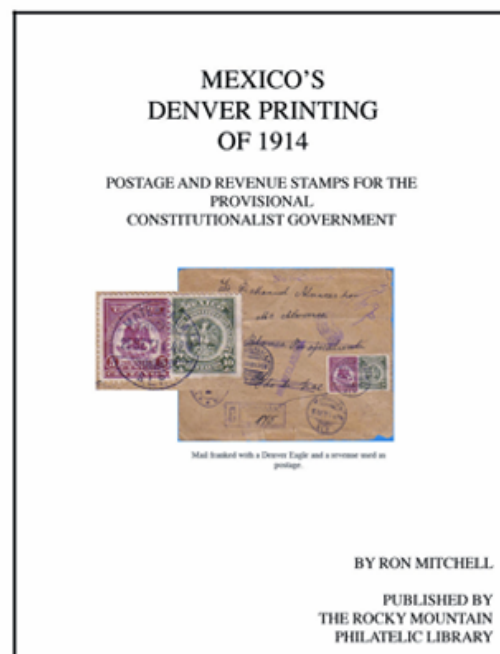
Mexico belonged to the Universal Postal Union, but due to the turmoil in Mexico at the time, sample stamps were never sent to the UPU. Initially the stamps were not valid for mail to the United States as the U.S. did not recognize the rebel factions. Letters could be sent across the border but required postage due in the U.S. One chapter is devoted to Constitutionalist rates during this period with many covers shown. Due to stamp shortages the Denver revenues were authorized for use as postage.

Subsequent chapters describe earliest known use, provisional cancels (often manuscript), district overprints, military mail, provisional overprints, official mail, foreign destinations and railroad routes among other topics. One chapter provides a detailed analysis of mail to the United States, the exchange states by zone, the introduction and later discontinuance of postage due, and examples of mixed use of revenues and Eagle postage. Another chapter describes the philatelic creations of several entrepreneurs who seized the opportunity to prepare covers and even fakes. Although the primary period of use for these stamps was essentially June to November 1914, there was scattered usage into 1915 and eventual overprinting of the Denver Eagles for use in 1916.

One of the major assets of this book is the census data from the author's collection as well as information from other serious collectors. Appendix 1 consists of extensive tables of census information by stamp issue, denomination, and earliest and latest known use. Another appendix shows the relationship of Mexican diplomats to their friends in Denver that resulted in the unusual printing arrangement. Author Mitchell was fortunate to interview some Denver descendants to complete this incredible story.

A number of tools enhance the utility of the handbook. These include listings of the illustrations, tables, and maps; a list of abbreviations; railroad mail routes; an extensive bibliography and an index. Accompanying the book is a DVD of the maps and illustrations so that they can be enlarged and studied. The DVD has a PDF[®] introduction and the image files, seen with appropriate software, are grouped by page number corresponding to the pages in the book.

Although the stamps were created and used during difficult times and only for a short period, quite a few stamps and covers survive. The book is a labor of love of its author who spent years in collecting, studying and researching the events that led to an exciting time in Mexican history and its philately.



FRIENDS OF THE WESTERN PHILATELIC LIBRARY

MEMBERSHIP APPLICATION

NAME _____ DATE _____
 STREET _____ NEW MEMBER ____RENEWING____
 CITY _____ PHONE () _____
 STATE/COUNTRY _____ ZIP _____ PROPOSED BY _____
 E-MAIL _____

What are your Collecting Interests?

What literature would you like to see in the Philatelic Library? Name specific titles and authors, if possible.

Would you be willing to make a donation of this publication to the library?

Do you have experience or knowledge in any of the following areas that could benefit the library?

Philatelic Literature	Publications	Typing
Postal History	Publicity writing	Computer maintenance
Library work/Cataloging	Philatelic writing	Database programing
Public Speaking	Photography	Computer Interface/Networking
Public Relations	Art/Graphics	Translation (specify languages)

MEMBERSHIP DUES AND DONATIONS

Please enroll me as a member of the Friends of the Western Philatelic Library, Inc.

Individual annual memberships, by calendar year, are:

Participating: U.S. \$20.00; Canada \$22.00; Overseas (Air Mail) \$28.00

Contributing: U.S. \$30.00; Canada \$34.00; Overseas (Air Mail) \$38.00

Other categories: Life (no annual dues) \$175.00

Life Overseas \$200.00

Founder: \$1000.00

Enclosed: Membership\$ _____

Donation\$ _____

Total \$ _____

Donations in any amount are appreciated.

Donations to the Book Purchase Fund or Library Operation Fund may be specified.

Please Note: All donations to the Friends of the Western Philatelic Library, above the membership amount, may be tax deductible! In appreciation to those who become a member at the Contributor level (or higher) you may choose any book or literature on the "Bonus Book List" to be sent at no charge.

The Friends of the Western Philatelic Library, is an organization of philatelists assisting in the growth and maintenance of the Western Philatelic Library, located 40 miles south of San Francisco. The library is one of the largest public philatelic libraries in the United States today, containing over 3000 lineal feet of shelving for books, catalogs and bound periodicals, plus 48 drawers of unbound periodicals and 30 drawers of pamphlets with a 15 drawer index. We hope that you will want to join in the building of the future of the Western Philatelic Library. This can be done in many ways, as indicated by your offer to help with your time and talents or through donations of material. We need all types of philatelic publications, including books, catalogs and any other reference material. Any kind of literature which would be of use to beginner or advanced collector is desired. All donations will be acknowledged, and appropriate items will carry an attractive bookplate honoring its donor. Donations of material may be directed to the Friends' Sunnyvale Post Office Box at low library postal rates.

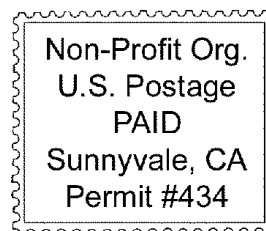
Benefits of Membership include:

1. *The Bay Phil*, bi-monthly newsletter of Reviews, Tear Sheet, Book lists and publishing announcements.
2. Complimentary listing of new and duplicate books available in the Philatelic Library.
3. Complimentary price lists of philatelic literature and tear sheets available from stock.
4. Complimentary catalogs of auctions of literature and stamps to be held by the "Friends."
5. A discount of 10% on purchases of duplicate literature.
6. Submission of your suggested list of specific titles of philatelic literature, or your donation of publications so that others may also increase their philatelic knowledge.
7. Member Buy/Sell ads in *The Bay Phil*.

Please make check payable to: **Friends of the Western Philatelic Library, Inc.**

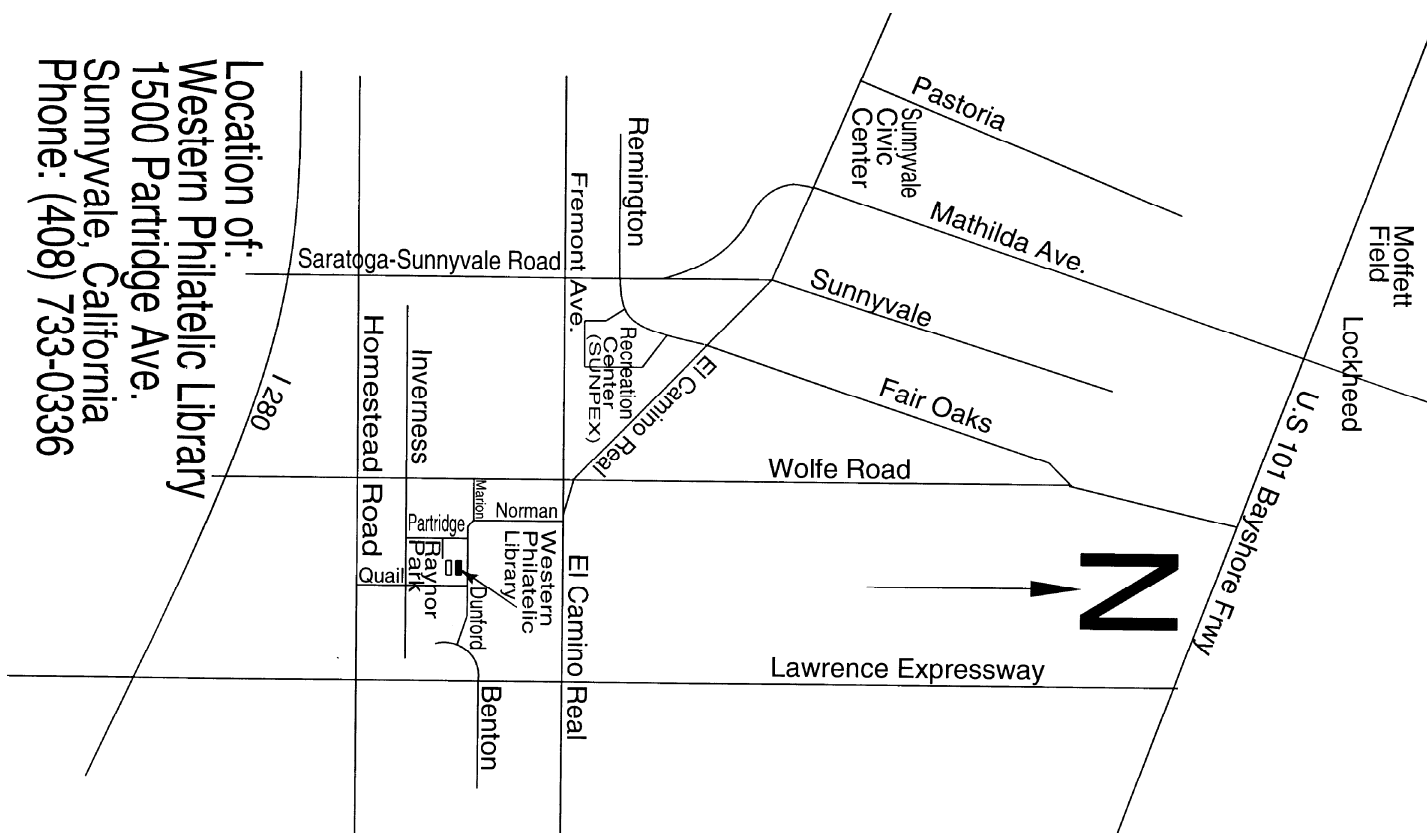
Mail to: P.O. Box 2219, Sunnyvale, California 94087

BP 286



P.O. Box 2219 - Sunnyvale, CA 94087

ADDRESS SERVICE REQUESTED



Location of:
Western Philatelic Library
1500 Partridge Ave.
Sunnyvale, California
Phone: (408) 733-0336